



**Notes to Users**

1. Please refer to the **Disclaimer** below.
2. Please review the associated project report before referring to the maps: Northwest Hydraulic Consultants Ltd. (NHC). 2023. 'Northwest Vancouver Island Tsunami Risk Assessment (Phase 2)'. Report prepared for Ocean Networks Canada. NHC project number 3006332.
3. Tsunami model results shown correspond to an earthquake with a magnitude of 9.2 from the Alaska-Aleutian Subduction Zone. Please refer to the project report for additional information on tsunami source.
4. Initial water level for tsunami simulations consists of current-day Higher High Water Mean Tide (HHWMT) which at Winter Harbour and Gold River terminal correspond to an elevation of 1.5 m above the Canadian Geodetic Vertical Datum of 2013 (CGVD2013). HHWMT is defined as the average from all the higher high waters from 19 years of tidal predictions.
5. Inundation maps show the tsunami inundation as predicted by the numerical model as well as the tsunami inundation level for emergency planning which includes a safety factor. This safety factor was applied by increasing by 50% the vertical distance of the maximum water surface above a reference plane corresponding to HHWMT. Inundation levels mapped do not include any freeboard or any setback.
6. The accuracy of the inundation extents is limited by the accuracy of the available bathymetric and topographic data as well as uncertainties associated to the numerical modelling approach used. Please refer to the project report for a discussion on study limitations.
7. The accuracy of inundation mapping is limited by the accuracy of the available orthoimagery basemap. Horizontal shifts between mapping and the basemap vary approximately from 5 m up to 20 m. Please refer to the project report for a discussion on study limitations.
8. These maps provide results for one possible tsunami scenario with associated earthquake magnitude and subduction zone rupture mechanism. Tsunami hazards and associated effects can vary for different tsunami scenarios that may occur.
9. Inundation maps do not reflect all risks associated with a tsunami. Strong currents and debris mobilized from shorelines can be significant hazards.
10. Service roads and/or resource roads shown on these maps may be decommissioned and overgrown with vegetation inhibiting their use. The status of such roads should be reviewed as part of evacuation planning. These maps may not show all roads and pathways which may be considered for evacuation planning.
11. The influence stream flow may have on the propagation and inundation of tsunamis in rivers and creeks was not included in the numerical model.

**Data Sources and References**

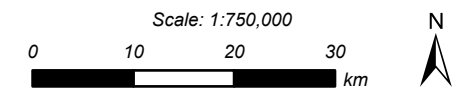
1. Topographic basemaps from Esri Canada, Natural Resources Canada, and Esri Canadian Community Maps contributors.
2. Imagery basemaps from Esri and Maxar.
3. First Nation administrative boundaries based on GeoBC data with adjustments by NHC and should be considered as approximate only.
4. Road locations and classification based on GeoBC Digital Roads Atlas with adjustments by NHC and should be considered approximate only.
5. Ferry route, municipal boundary, and regional district boundary data from GeoBC.

**Disclaimer**

These maps have been prepared by **Northwest Hydraulic Consultants Ltd.** for the benefit of **Ocean Networks Canada Society and The Lake Family's All One Fund** for specific application to the **Northwest Vancouver Island Tsunami Risk Assessment Phase II** project undertaken to support emergency planning in Nootka Sound and Quatsino Sound, British Columbia. The information and data contained herein represent **Northwest Hydraulic Consultants Ltd.**'s best professional judgement in light of the knowledge and information available to **Northwest Hydraulic Consultants Ltd.** at the time of preparation and was prepared in accordance with generally accepted engineering and geoscience practices. Except as required by law, these maps and the information and data contained herein are for the information of **Ocean Networks Canada Society and The Lake Family's All One Fund**, their officers, and employees. **Northwest Hydraulic Consultants Ltd.** denies any liability whatsoever to other parties who may obtain access to these maps for any injury, loss, or damage suffered by such parties arising from their use of or reliance upon these maps or any of their contents.



- 1:5,000 INUNDATION MAP SHEET
- REGIONAL DISTRICT BOUNDARY
- FERRY ROUTE

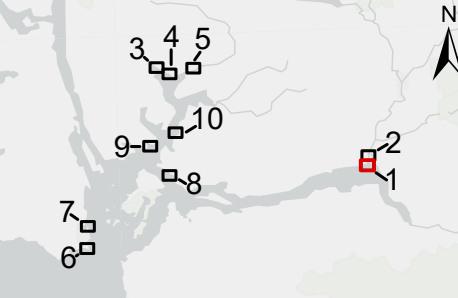


Coordinate System: NAD 1983 CSRS UTM ZONE 9N  
Units: METRES

Engineer	PSG	GIS	SWM	Reviewer	GFL
Job Number	3006332			Date	11-MAY-2023

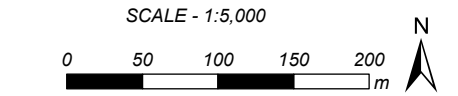
**NORTHWEST VANCOUVER ISLAND  
TSUNAMI RISK ASSESSMENT PROJECT**

**INUNDATION LEVEL FOR  
EMERGENCY PLANNING  
ALASKA TSUNAMI  
MAP INDEX & NOTES**



- INUNDATION EXTENTS WITH SAFETY FACTOR
- INUNDATION EXTENTS WITHOUT SAFETY FACTOR
- MAJOR CONTOUR AT 10 m INTERVAL  
*labelled with elevation in metres*
- MINOR CONTOUR AT 2 m INTERVAL
- PAVED ROAD
- UNPAVED ROAD
- PEDESTRIAN WALKWAY / TRAIL
- FERRY ROUTE
- FIRST NATION ADMINISTRATIVE BOUNDARY
- MUNICIPAL BOUNDARY
- PROVINCIAL PARK

REFER TO INDEX MAP FOR COMPLETE NOTES. A SAFETY FACTOR WAS APPLIED TO OBTAIN THE TSUNAMI INUNDATION LEVEL FOR EMERGENCY PLANNING. EFFECTS OF CLIMATE CHANGE-INDUCED SEA LEVEL RISE NOT INCLUDED. OVERWATER HAZARDS SUCH AS STRONG CURRENT VELOCITY NOT SHOWN ON THE INUNDATION MAPS.



Coordinate System: NAD 1983 CSRS UTM ZONE 9N  
Units: METRES; Vertical Datum: CGVD2013

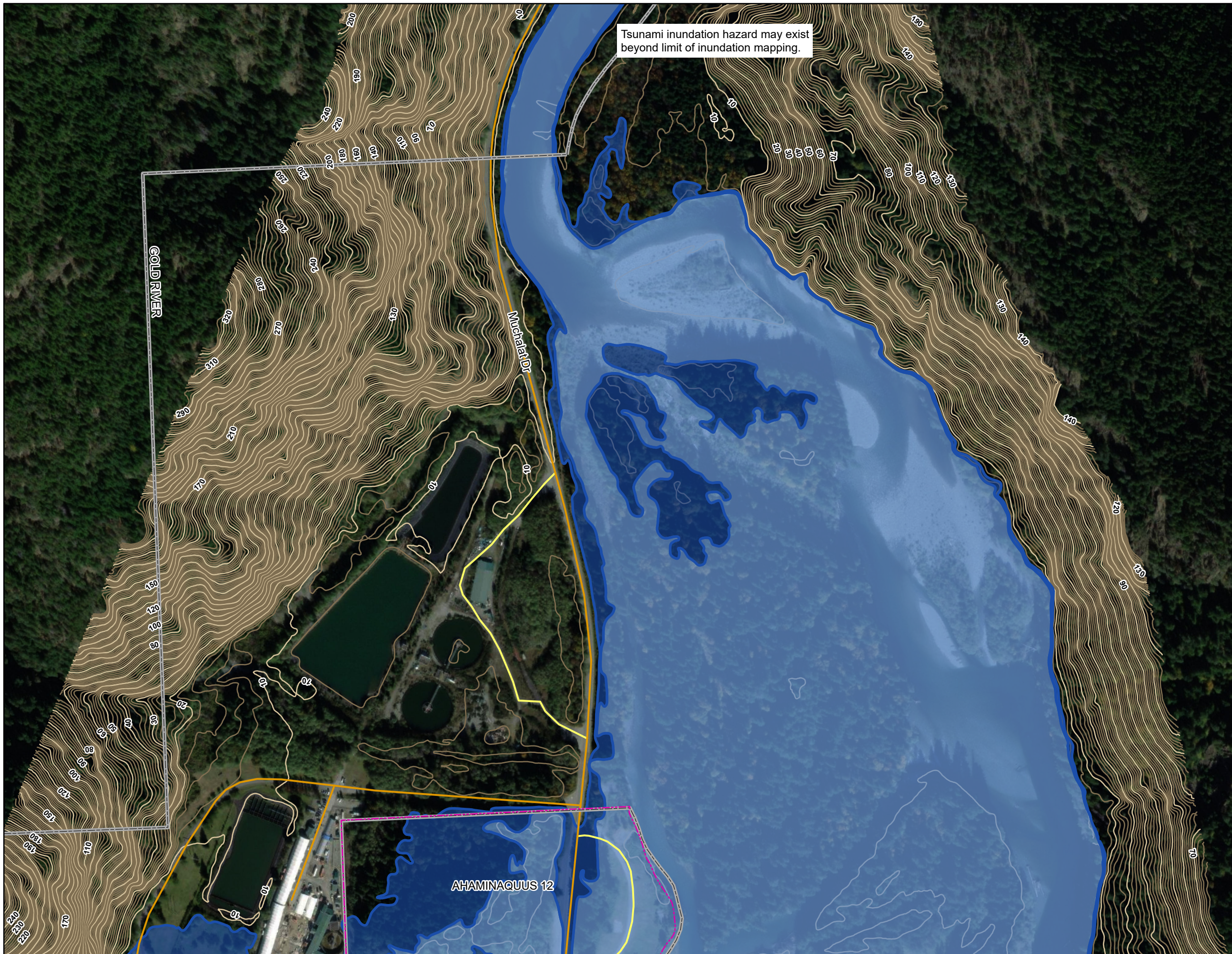
Engineer	PSG	GIS	SWM	Reviewer	GFL
----------	-----	-----	-----	----------	-----

Job Number	3006332	Date	11-MAY-2023
------------	---------	------	-------------

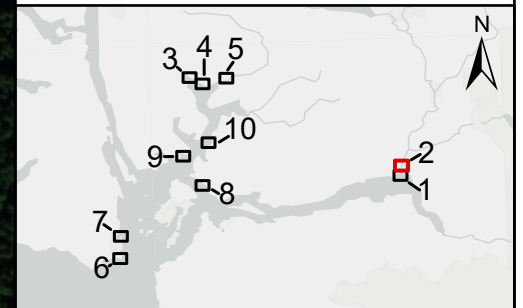
**NORTHWEST VANCOUVER ISLAND  
TSUNAMI RISK ASSESSMENT PROJECT**

**GOLD RIVER WATERFRONT  
INUNDATION LEVEL FOR  
EMERGENCY PLANNING  
ALASKA TSUNAMI**

SWM: \\mainfile-van\Projects\Active\3006332 NW Vancouver Island Tsunami Risk Assessment - Phase 2\95 GIS\3006332\_map\_5K\_InundationMapping\_1.aprx

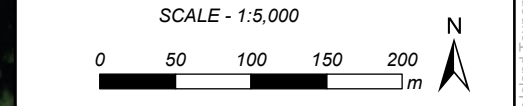


Tsunami inundation hazard may exist beyond limit of inundation mapping.



- INUNDATION EXTENTS WITH SAFETY FACTOR
- INUNDATION EXTENTS WITHOUT SAFETY FACTOR
- MAJOR CONTOUR AT 10 m INTERVAL  
*labelled with elevation in metres*
- MINOR CONTOUR AT 2 m INTERVAL
- PAVED ROAD
- UNPAVED ROAD
- PEDESTRIAN WALKWAY / TRAIL
- FERRY ROUTE
- FIRST NATION ADMINISTRATIVE BOUNDARY
- MUNICIPAL BOUNDARY
- PROVINCIAL PARK

REFER TO INDEX MAP FOR COMPLETE NOTES. A SAFETY FACTOR WAS APPLIED TO OBTAIN THE TSUNAMI INUNDATION LEVEL FOR EMERGENCY PLANNING. EFFECTS OF CLIMATE CHANGE-INDUCED SEA LEVEL RISE NOT INCLUDED. OVERWATER HAZARDS SUCH AS STRONG CURRENT VELOCITY NOT SHOWN ON THE INUNDATION MAPS.



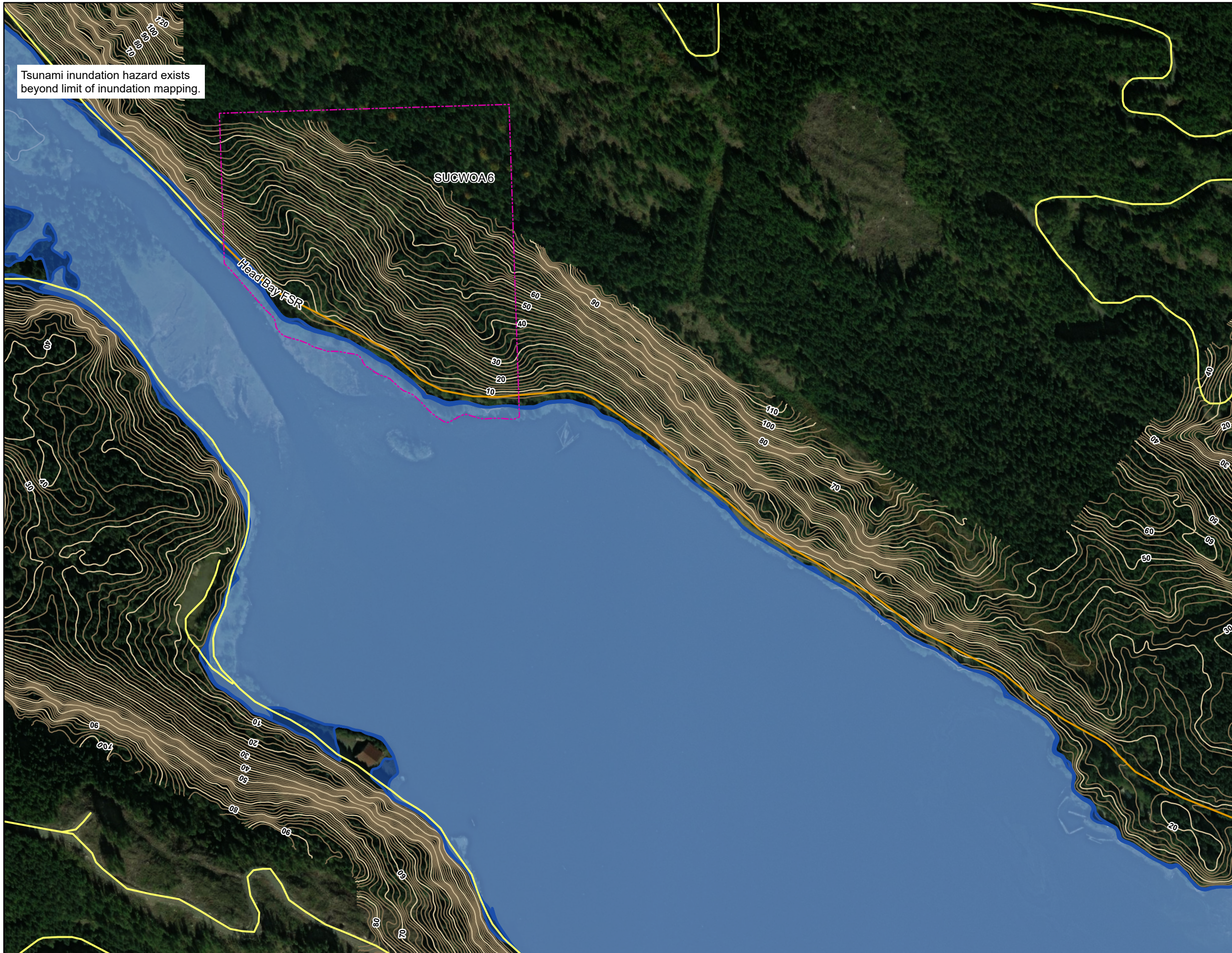
Coordinate System: NAD 1983 CSRS UTM ZONE 9N  
Units: METRES; Vertical Datum: CGVD2013

Engineer	PSG	GIS	SWM	Reviewer	GFL
Job Number	3006332		Date	11-MAY-2023	

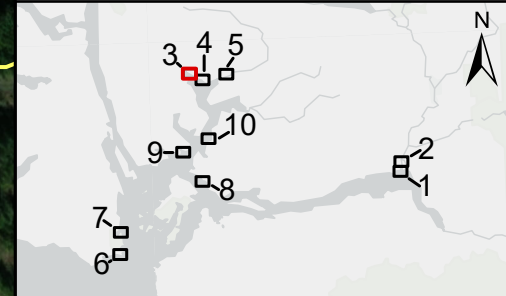
**NORTHWEST VANCOUVER ISLAND  
TSUNAMI RISK ASSESSMENT PROJECT**

**GOLD RIVER HWY  
INUNDATION LEVEL FOR  
EMERGENCY PLANNING  
ALASKA TSUNAMI**

SWM: \\mainfile-van\Projects\Active\3006332 NW Vancouver Island Tsunami Risk Assessment - Phase 2\95 GIS\3006332\_map\_5K\_InundationMapping\_1.aprx

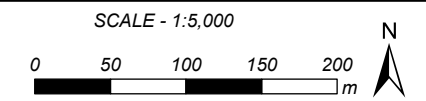


Tsunami inundation hazard exists beyond limit of inundation mapping.



- INUNDATION EXTENTS WITH SAFETY FACTOR
- INUNDATION EXTENTS WITHOUT SAFETY FACTOR
- MAJOR CONTOUR AT 10 m INTERVAL  
*labelled with elevation in metres*
- MINOR CONTOUR AT 2 m INTERVAL
- PAVED ROAD
- UNPAVED ROAD
- PEDESTRIAN WALKWAY / TRAIL
- FERRY ROUTE
- FIRST NATION ADMINISTRATIVE BOUNDARY
- MUNICIPAL BOUNDARY
- PROVINCIAL PARK

REFER TO INDEX MAP FOR COMPLETE NOTES. A SAFETY FACTOR WAS APPLIED TO OBTAIN THE TSUNAMI INUNDATION LEVEL FOR EMERGENCY PLANNING. EFFECTS OF CLIMATE CHANGE-INDUCED SEA LEVEL RISE NOT INCLUDED. OVERWATER HAZARDS SUCH AS STRONG CURRENT VELOCITY NOT SHOWN ON THE INUNDATION MAPS.



Coordinate System: NAD 1983 CSRS UTM ZONE 9N  
Units: METRES; Vertical Datum: CGVD2013

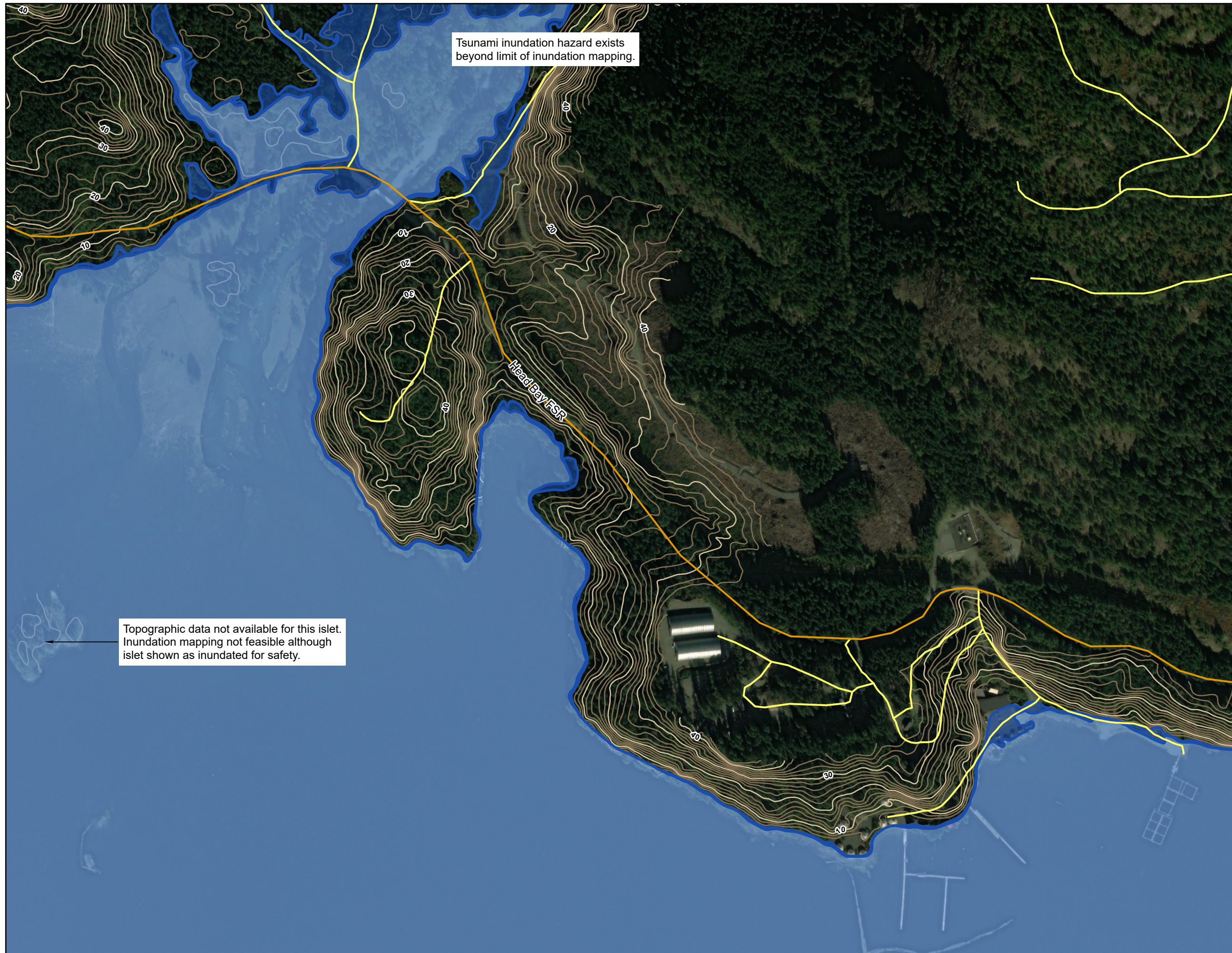
Engineer	PSG	GIS	SWM	Reviewer	GFL
----------	-----	-----	-----	----------	-----

Job Number	3006332	Date	11-MAY-2023
------------	---------	------	-------------

**NORTHWEST VANCOUVER ISLAND  
TSUNAMI RISK ASSESSMENT PROJECT**

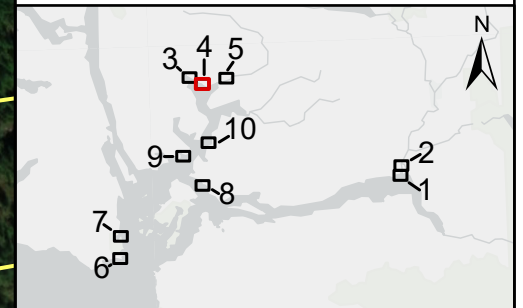
**HEAD BAY  
INUNDATION LEVEL FOR  
EMERGENCY PLANNING  
ALASKA TSUNAMI**

S:\NW\mainfile-van\Projects\Active\3006332 NW Vancouver Island Tsunami Risk Assessment - Phase 2\95 GIS\3006332\_map\_5K\_inundation\mapping\_1.aprx



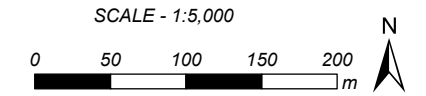
Tsunami inundation hazard exists beyond limit of inundation mapping.

Topographic data not available for this islet. Inundation mapping not feasible although islet shown as inundated for safety.



- INUNDATION EXTENTS WITH SAFETY FACTOR
- INUNDATION EXTENTS WITHOUT SAFETY FACTOR
- MAJOR CONTOUR AT 10 m INTERVAL  
*labelled with elevation in metres*
- MINOR CONTOUR AT 2 m INTERVAL
- PAVED ROAD
- UNPAVED ROAD
- PEDESTRIAN WALKWAY / TRAIL
- FERRY ROUTE
- FIRST NATION ADMINISTRATIVE BOUNDARY
- MUNICIPAL BOUNDARY
- PROVINCIAL PARK

REFER TO INDEX MAP FOR COMPLETE NOTES. A SAFETY FACTOR WAS APPLIED TO OBTAIN THE TSUNAMI INUNDATION LEVEL FOR EMERGENCY PLANNING. EFFECTS OF CLIMATE CHANGE-INDUCED SEA LEVEL RISE NOT INCLUDED. OVERWATER HAZARDS SUCH AS STRONG CURRENT VELOCITY NOT SHOWN ON THE INUNDATION MAPS.



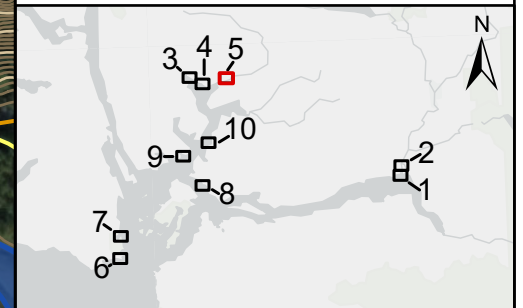
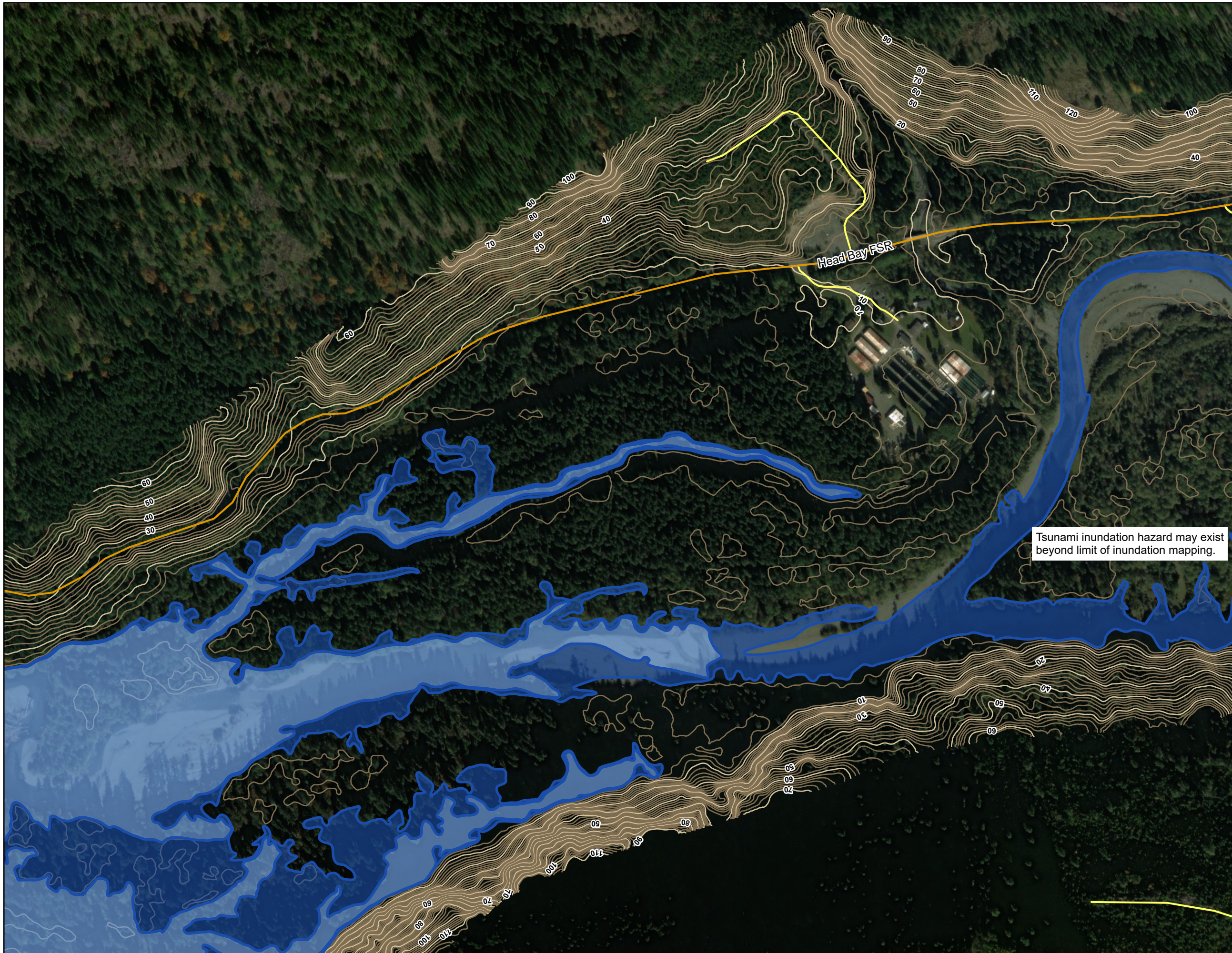
Coordinate System: NAD 1983 CSRS UTM ZONE 9N  
Units: METRES; Vertical Datum: CGVD2013

Engineer	PSG	GIS	SWM	Reviewer	GFL
Job Number	3006332		Date	11-MAY-2023	

**NORTHWEST VANCOUVER ISLAND  
TSUNAMI RISK ASSESSMENT PROJECT**

**CANTON CREEK  
INUNDATION LEVEL FOR  
EMERGENCY PLANNING  
ALASKA TSUNAMI**

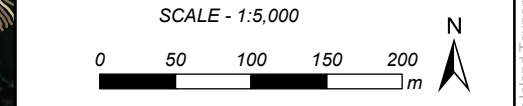
S:\NW\mainfile-van\Projects\Active\3006332 NW Vancouver Island Tsunami Risk Assessment - Phase 2\95 GIS\3006332\_map\_5K\_InundationMapping\_1.aprx



- INUNDATION EXTENTS WITH SAFETY FACTOR
- INUNDATION EXTENTS WITHOUT SAFETY FACTOR
- MAJOR CONTOUR AT 10 m INTERVAL  
*labelled with elevation in metres*
- MINOR CONTOUR AT 2 m INTERVAL
- PAVED ROAD
- UNPAVED ROAD
- PEDESTRIAN WALKWAY / TRAIL
- FERRY ROUTE
- FIRST NATION ADMINISTRATIVE BOUNDARY
- MUNICIPAL BOUNDARY
- PROVINCIAL PARK

Tsunami inundation hazard may exist beyond limit of inundation mapping.

REFER TO INDEX MAP FOR COMPLETE NOTES. A SAFETY FACTOR WAS APPLIED TO OBTAIN THE TSUNAMI INUNDATION LEVEL FOR EMERGENCY PLANNING. EFFECTS OF CLIMATE CHANGE-INDUCED SEA LEVEL RISE NOT INCLUDED. OVERWATER HAZARDS SUCH AS STRONG CURRENT VELOCITY NOT SHOWN ON THE INUNDATION MAPS.



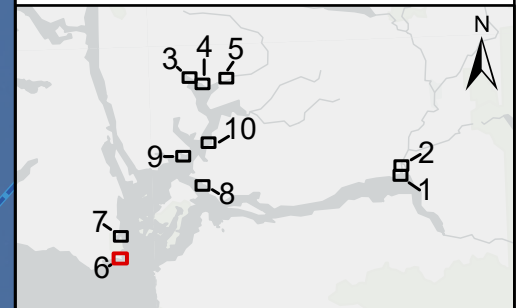
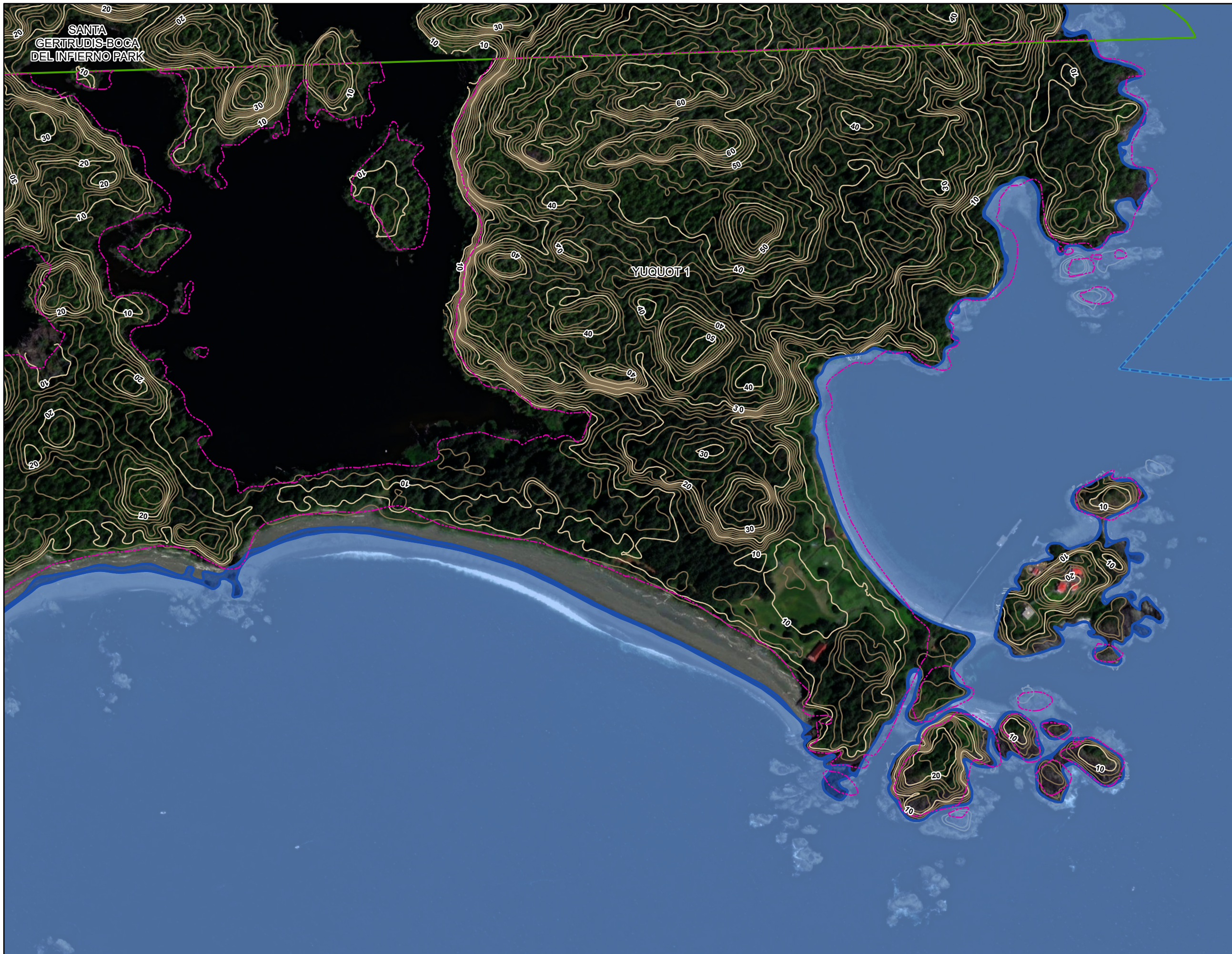
Coordinate System: NAD 1983 CSRS UTM ZONE 9N  
Units: METRES; Vertical Datum: CGVD2013

Engineer	PSG	GIS	SWM	Reviewer	GFL
Job Number	3006332		Date	11-MAY-2023	

NORTHWEST VANCOUVER ISLAND  
TSUNAMI RISK ASSESSMENT PROJECT

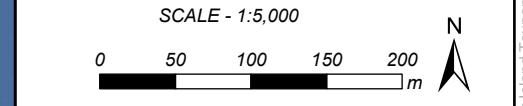
CONUMA RIVER  
INUNDATION LEVEL FOR  
EMERGENCY PLANNING  
ALASKA TSUNAMI

SWM: \mainfile\van\Projects\Active\3006332 NW Vancouver Island Tsunami Risk Assessment - Phase 2\95 GIS\3006332\_map\_5K\_inundation\mapping\_1.aprx



- INUNDATION EXTENTS WITH SAFETY FACTOR
- INUNDATION EXTENTS WITHOUT SAFETY FACTOR
- MAJOR CONTOUR AT 10 m INTERVAL  
*labelled with elevation in metres*
- MINOR CONTOUR AT 2 m INTERVAL
- PAVED ROAD
- UNPAVED ROAD
- PEDESTRIAN WALKWAY / TRAIL
- FERRY ROUTE
- FIRST NATION ADMINISTRATIVE BOUNDARY
- MUNICIPAL BOUNDARY
- PROVINCIAL PARK

REFER TO INDEX MAP FOR COMPLETE NOTES. A SAFETY FACTOR WAS APPLIED TO OBTAIN THE TSUNAMI INUNDATION LEVEL FOR EMERGENCY PLANNING. EFFECTS OF CLIMATE CHANGE-INDUCED SEA LEVEL RISE NOT INCLUDED. OVERWATER HAZARDS SUCH AS STRONG CURRENT VELOCITY NOT SHOWN ON THE INUNDATION MAPS.



Coordinate System: NAD 1983 CSRS UTM ZONE 9N  
Units: METRES; Vertical Datum: CGVD2013

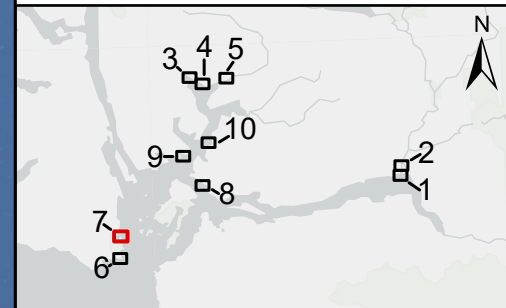
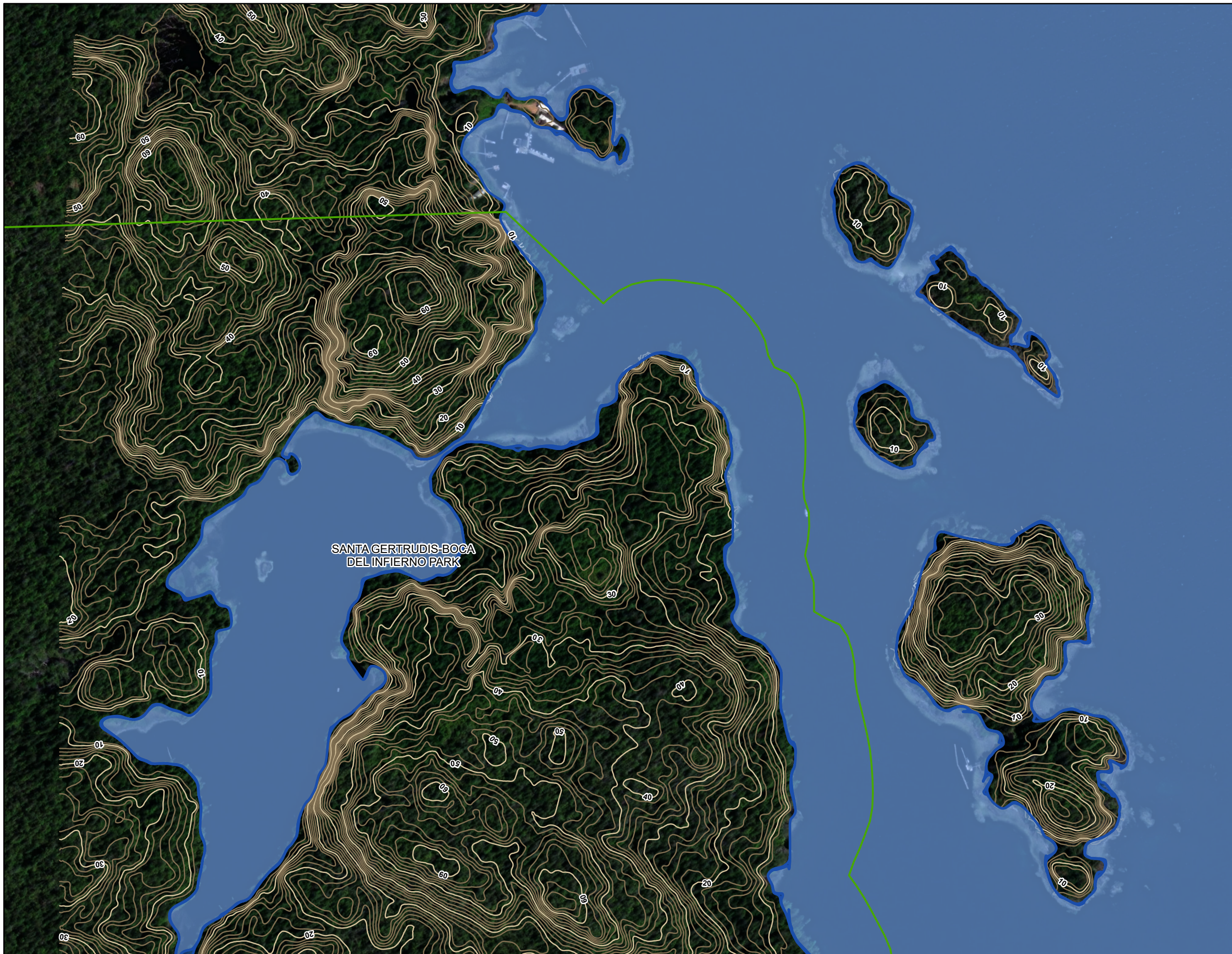
Engineer	PSG	GIS	SWM	Reviewer	GFL
----------	-----	-----	-----	----------	-----

Job Number	3006332	Date	11-MAY-2023
------------	---------	------	-------------

**NORTHWEST VANCOUVER ISLAND  
TSUNAMI RISK ASSESSMENT PROJECT**

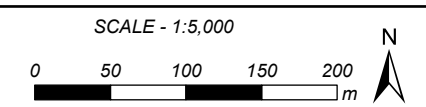
**YUQUOT  
INUNDATION LEVEL FOR  
EMERGENCY PLANNING  
ALASKA TSUNAMI**

SWM: \\mainfile-van\Projects\Active\30063332 NW Vancouver Island Tsunami Risk Assessment - Phase 2\95 GIS\30063332\_map\_5K\_InundationMapping\_1.aprx



- INUNDATION EXTENTS WITH SAFETY FACTOR
- INUNDATION EXTENTS WITHOUT SAFETY FACTOR
- MAJOR CONTOUR AT 10 m INTERVAL  
*labelled with elevation in metres*
- MINOR CONTOUR AT 2 m INTERVAL
- PAVED ROAD
- UNPAVED ROAD
- PEDESTRIAN WALKWAY / TRAIL
- FERRY ROUTE
- FIRST NATION ADMINISTRATIVE BOUNDARY
- MUNICIPAL BOUNDARY
- PROVINCIAL PARK

REFER TO INDEX MAP FOR COMPLETE NOTES. A SAFETY FACTOR WAS APPLIED TO OBTAIN THE TSUNAMI INUNDATION LEVEL FOR EMERGENCY PLANNING. EFFECTS OF CLIMATE CHANGE-INDUCED SEA LEVEL RISE NOT INCLUDED. OVERWATER HAZARDS SUCH AS STRONG CURRENT VELOCITY NOT SHOWN ON THE INUNDATION MAPS.



Coordinate System: NAD 1983 CSRS UTM ZONE 9N  
Units: METRES; Vertical Datum: CGVD2013

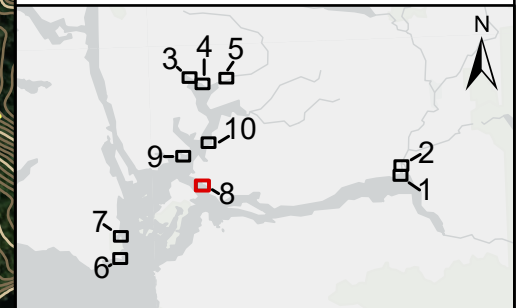
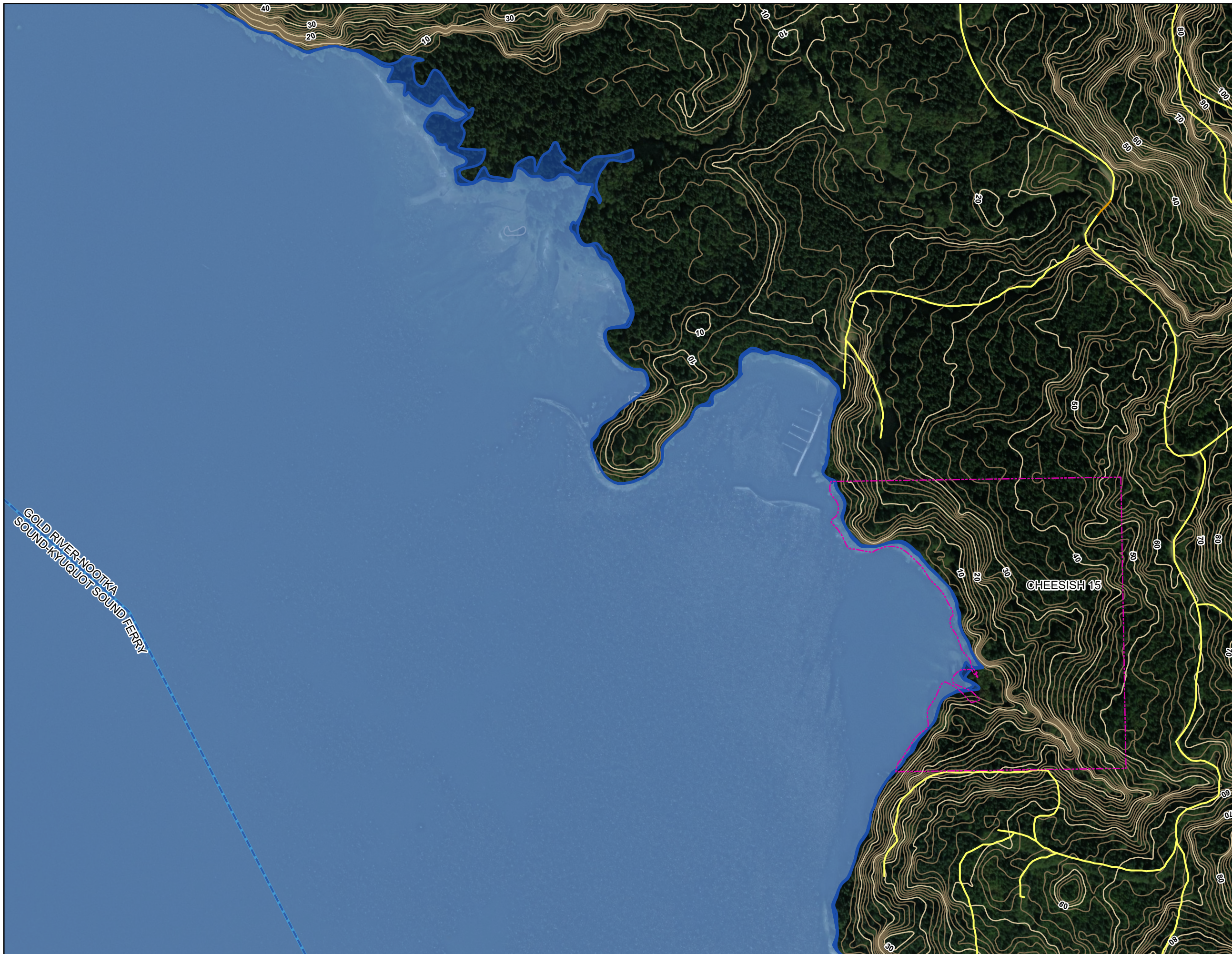
Engineer	PSG	GIS	SWM	Reviewer	GFL
----------	-----	-----	-----	----------	-----

Job Number	3006332	Date	11-MAY-2023
------------	---------	------	-------------

NORTHWEST VANCOUVER ISLAND  
TSUNAMI RISK ASSESSMENT PROJECT

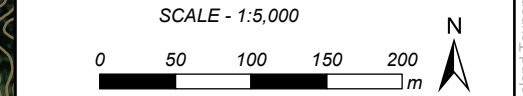
MCKAY PASSAGE  
INUNDATION LEVEL FOR  
EMERGENCY PLANNING  
ALASKA TSUNAMI

SWM: \mainfile-van\Projects\Active\3006332 NW Vancouver Island Tsunami Risk Assessment - Phase 2\95 GIS\3006332\_map\_5K\_inundation\mapping\_1.aprx



- INUNDATION EXTENTS WITH SAFETY FACTOR
- INUNDATION EXTENTS WITHOUT SAFETY FACTOR
- MAJOR CONTOUR AT 10 m INTERVAL  
*labelled with elevation in metres*
- MINOR CONTOUR AT 2 m INTERVAL
- PAVED ROAD
- UNPAVED ROAD
- PEDESTRIAN WALKWAY / TRAIL
- FERRY ROUTE
- FIRST NATION ADMINISTRATIVE BOUNDARY
- MUNICIPAL BOUNDARY
- PROVINCIAL PARK

REFER TO INDEX MAP FOR COMPLETE NOTES. A SAFETY FACTOR WAS APPLIED TO OBTAIN THE TSUNAMI INUNDATION LEVEL FOR EMERGENCY PLANNING. EFFECTS OF CLIMATE CHANGE-INDUCED SEA LEVEL RISE NOT INCLUDED. OVERWATER HAZARDS SUCH AS STRONG CURRENT VELOCITY NOT SHOWN ON THE INUNDATION MAPS.



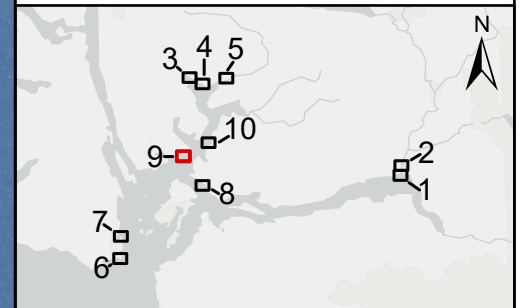
Coordinate System: NAD 1983 CSRS UTM ZONE 9N  
Units: METRES; Vertical Datum: CGVD2013

Engineer	PSG	GIS	SWM	Reviewer	GFL
Job Number	3006332		Date	11-MAY-2023	

**NORTHWEST VANCOUVER ISLAND  
TSUNAMI RISK ASSESSMENT PROJECT**

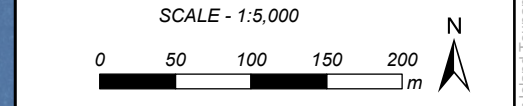
**CHEESISH  
INUNDATION LEVEL FOR  
EMERGENCY PLANNING  
ALASKA TSUNAMI**

SWM: \\mainfile-van\Projects\Active\3006332 NW Vancouver Island Tsunami Risk Assessment - Phase 2\95 GIS\3006332\_map\_5K\_inundation\mapping\_1.aprx



- INUNDATION EXTENTS WITH SAFETY FACTOR
- INUNDATION EXTENTS WITHOUT SAFETY FACTOR
- MAJOR CONTOUR AT 10 m INTERVAL  
*labelled with elevation in metres*
- MINOR CONTOUR AT 2 m INTERVAL
- PAVED ROAD
- UNPAVED ROAD
- PEDESTRIAN WALKWAY / TRAIL
- FERRY ROUTE
- FIRST NATION ADMINISTRATIVE BOUNDARY
- MUNICIPAL BOUNDARY
- PROVINCIAL PARK

REFER TO INDEX MAP FOR COMPLETE NOTES. A SAFETY FACTOR WAS APPLIED TO OBTAIN THE TSUNAMI INUNDATION LEVEL FOR EMERGENCY PLANNING. EFFECTS OF CLIMATE CHANGE-INDUCED SEA LEVEL RISE NOT INCLUDED. OVERWATER HAZARDS SUCH AS STRONG CURRENT VELOCITY NOT SHOWN ON THE INUNDATION MAPS.



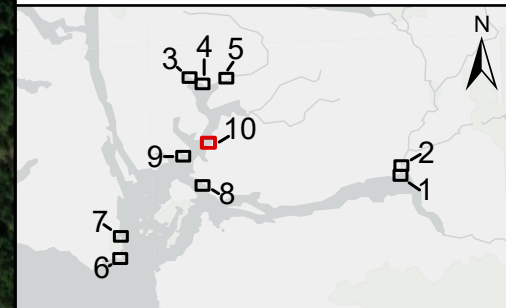
Coordinate System: NAD 1983 CSRS UTM ZONE 9N  
Units: METRES; Vertical Datum: CGVD2013

Engineer	PSG	GIS	SWM	Reviewer	GFL
Job Number	3006332		Date	11-MAY-2023	

**NORTHWEST VANCOUVER ISLAND  
TSUNAMI RISK ASSESSMENT PROJECT**

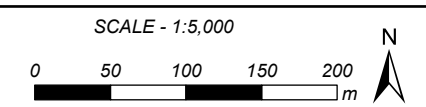
**CRITTER COVE  
INUNDATION LEVEL FOR  
EMERGENCY PLANNING  
ALASKA TSUNAMI**

S:\NW\mainfile-van\Projects\Active\3006332 NW Vancouver Island Tsunami Risk Assessment - Phase 2\95 GIS\3006332\_map\_5K\_InundationMapping\_1.aprx



- INUNDATION EXTENTS WITH SAFETY FACTOR
- INUNDATION EXTENTS WITHOUT SAFETY FACTOR
- MAJOR CONTOUR AT 10 m INTERVAL  
*labelled with elevation in metres*
- MINOR CONTOUR AT 2 m INTERVAL
- PAVED ROAD
- UNPAVED ROAD
- PEDESTRIAN WALKWAY / TRAIL
- FERRY ROUTE
- FIRST NATION ADMINISTRATIVE BOUNDARY
- MUNICIPAL BOUNDARY
- PROVINCIAL PARK

REFER TO INDEX MAP FOR COMPLETE NOTES. A SAFETY FACTOR WAS APPLIED TO OBTAIN THE TSUNAMI INUNDATION LEVEL FOR EMERGENCY PLANNING. EFFECTS OF CLIMATE CHANGE-INDUCED SEA LEVEL RISE NOT INCLUDED. OVERWATER HAZARDS SUCH AS STRONG CURRENT VELOCITY NOT SHOWN ON THE INUNDATION MAPS.



Coordinate System: NAD 1983 CSRS UTM ZONE 9N  
Units: METRES; Vertical Datum: CGVD2013

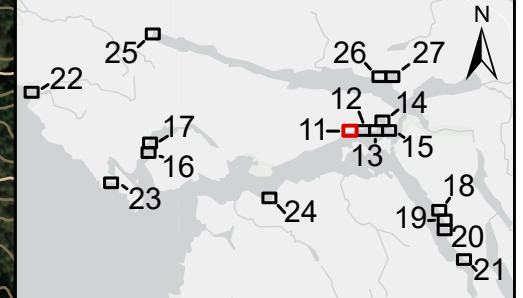
Engineer	PSG	GIS	SWM	Reviewer	GFL
----------	-----	-----	-----	----------	-----

Job Number	3006332	Date	11-MAY-2023
------------	---------	------	-------------

**NORTHWEST VANCOUVER ISLAND  
TSUNAMI RISK ASSESSMENT PROJECT**

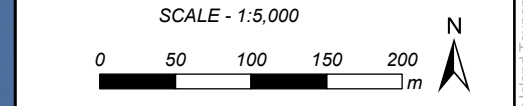
**COUGAR CREEK  
INUNDATION LEVEL FOR  
EMERGENCY PLANNING  
ALASKA TSUNAMI**

SWM: \mainfile\van\Projects\Active\3006332 NW Vancouver Island Tsunami Risk Assessment - Phase 2\95 GIS\3006332\_map\_5K\_inundation\mapping\_1.aprx



- INUNDATION EXTENTS WITH SAFETY FACTOR
- INUNDATION EXTENTS WITHOUT SAFETY FACTOR
- MAJOR CONTOUR AT 10 m INTERVAL  
*labelled with elevation in metres*
- MINOR CONTOUR AT 2 m INTERVAL
- PAVED ROAD
- UNPAVED ROAD
- PEDESTRIAN WALKWAY / TRAIL
- FERRY ROUTE
- FIRST NATION ADMINISTRATIVE BOUNDARY
- MUNICIPAL BOUNDARY
- PROVINCIAL PARK

REFER TO INDEX MAP FOR COMPLETE NOTES. A SAFETY FACTOR WAS APPLIED TO OBTAIN THE TSUNAMI INUNDATION LEVEL FOR EMERGENCY PLANNING. EFFECTS OF CLIMATE CHANGE-INDUCED SEA LEVEL RISE NOT INCLUDED. OVERWATER HAZARDS SUCH AS STRONG CURRENT VELOCITY NOT SHOWN ON THE INUNDATION MAPS.



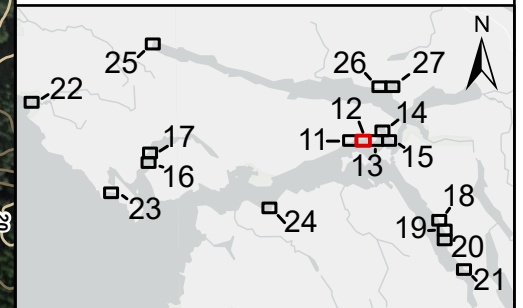
Coordinate System: NAD 1983 CSRS UTM ZONE 9N  
Units: METRES; Vertical Datum: CGVD2013

Engineer	PSG	GIS	SWM	Reviewer	GFL
Job Number	3006332		Date	11-MAY-2023	

**NORTHWEST VANCOUVER ISLAND  
TSUNAMI RISK ASSESSMENT PROJECT**

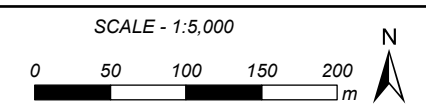
**QUATSINO WEST  
INUNDATION LEVEL FOR  
EMERGENCY PLANNING  
ALASKA TSUNAMI**

S:\NW\mainfile\van\Projects\Active\3006332 NW Vancouver Island Tsunami Risk Assessment - Phase 2\95 GIS\3006332\_map\_5K\_InundationMapping\_1.aprx



- INUNDATION EXTENTS WITH SAFETY FACTOR
- INUNDATION EXTENTS WITHOUT SAFETY FACTOR
- MAJOR CONTOUR AT 10 m INTERVAL  
*labelled with elevation in metres*
- MINOR CONTOUR AT 2 m INTERVAL
- PAVED ROAD
- UNPAVED ROAD
- PEDESTRIAN WALKWAY / TRAIL
- FERRY ROUTE
- FIRST NATION ADMINISTRATIVE BOUNDARY
- MUNICIPAL BOUNDARY
- PROVINCIAL PARK

REFER TO INDEX MAP FOR COMPLETE NOTES. A SAFETY FACTOR WAS APPLIED TO OBTAIN THE TSUNAMI INUNDATION LEVEL FOR EMERGENCY PLANNING. EFFECTS OF CLIMATE CHANGE-INDUCED SEA LEVEL RISE NOT INCLUDED. OVERWATER HAZARDS SUCH AS STRONG CURRENT VELOCITY NOT SHOWN ON THE INUNDATION MAPS.



Coordinate System: NAD 1983 CSRS UTM ZONE 9N  
Units: METRES; Vertical Datum: CGVD2013

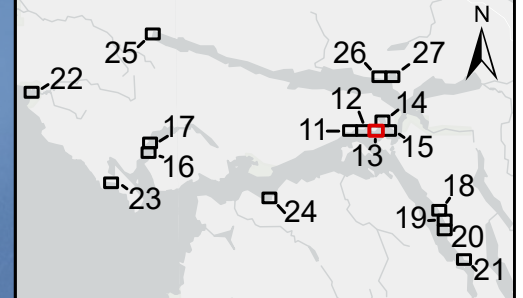
Engineer	PSG	GIS	SWM	Reviewer	GFL
----------	-----	-----	-----	----------	-----

Job Number	3006332	Date	11-MAY-2023
------------	---------	------	-------------

**NORTHWEST VANCOUVER ISLAND  
TSUNAMI RISK ASSESSMENT PROJECT**

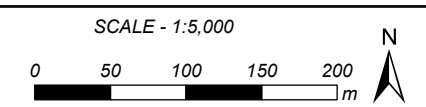
**QUATSINO CENTRE  
INUNDATION LEVEL FOR  
EMERGENCY PLANNING  
ALASKA TSUNAMI**

S:\NW\_Vancouver\_Island\_Tsunami\_Risk\_Assessment - Phase 2\95 GIS\3006332\_map\_5K\_InundationMapping\_1.aprx



- INUNDATION EXTENTS WITH SAFETY FACTOR
- INUNDATION EXTENTS WITHOUT SAFETY FACTOR
- MAJOR CONTOUR AT 10 m INTERVAL  
*labelled with elevation in metres*
- MINOR CONTOUR AT 2 m INTERVAL
- PAVED ROAD
- UNPAVED ROAD
- PEDESTRIAN WALKWAY / TRAIL
- FERRY ROUTE
- FIRST NATION ADMINISTRATIVE BOUNDARY
- MUNICIPAL BOUNDARY
- PROVINCIAL PARK

REFER TO INDEX MAP FOR COMPLETE NOTES. A SAFETY FACTOR WAS APPLIED TO OBTAIN THE TSUNAMI INUNDATION LEVEL FOR EMERGENCY PLANNING. EFFECTS OF CLIMATE CHANGE-INDUCED SEA LEVEL RISE NOT INCLUDED. OVERWATER HAZARDS SUCH AS STRONG CURRENT VELOCITY NOT SHOWN ON THE INUNDATION MAPS.



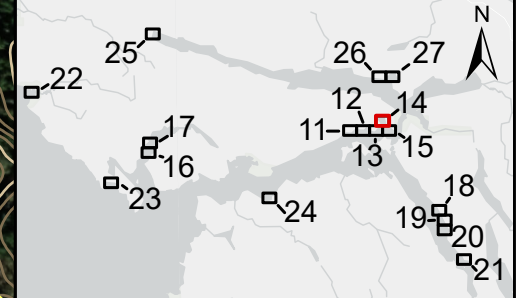
Coordinate System: NAD 1983 CSRS UTM ZONE 9N  
Units: METRES; Vertical Datum: CGVD2013

Engineer	PSG	GIS	SWM	Reviewer	GFL
Job Number	3006332			Date	11-MAY-2023

**NORTHWEST VANCOUVER ISLAND  
TSUNAMI RISK ASSESSMENT PROJECT**

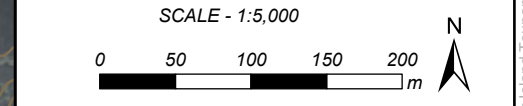
**QUATSINO EAST  
INUNDATION LEVEL FOR  
EMERGENCY PLANNING  
ALASKA TSUNAMI**

S:\NW\mainfile-van\Projects\Active\3006332 NW Vancouver Island Tsunami Risk Assessment - Phase 2\95 GIS\3006332\_map\_5K\_InundationMapping\_1.aprx



- INUNDATION EXTENTS WITH SAFETY FACTOR
- INUNDATION EXTENTS WITHOUT SAFETY FACTOR
- MAJOR CONTOUR AT 10 m INTERVAL  
*labelled with elevation in metres*
- MINOR CONTOUR AT 2 m INTERVAL
- PAVED ROAD
- UNPAVED ROAD
- PEDESTRIAN WALKWAY / TRAIL
- FERRY ROUTE
- FIRST NATION ADMINISTRATIVE BOUNDARY
- MUNICIPAL BOUNDARY
- PROVINCIAL PARK

REFER TO INDEX MAP FOR COMPLETE NOTES. A SAFETY FACTOR WAS APPLIED TO OBTAIN THE TSUNAMI INUNDATION LEVEL FOR EMERGENCY PLANNING. EFFECTS OF CLIMATE CHANGE-INDUCED SEA LEVEL RISE NOT INCLUDED. OVERWATER HAZARDS SUCH AS STRONG CURRENT VELOCITY NOT SHOWN ON THE INUNDATION MAPS.



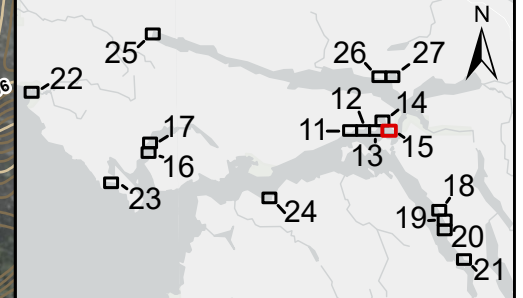
Coordinate System: NAD 1983 CSRS UTM ZONE 9N  
Units: METRES; Vertical Datum: CGVD2013

Engineer	PSG	GIS	SWM	Reviewer	GFL
Job Number	3006332		Date	11-MAY-2023	

**NORTHWEST VANCOUVER ISLAND  
TSUNAMI RISK ASSESSMENT PROJECT**

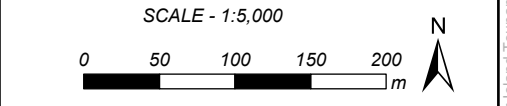
**HECATE COVE  
INUNDATION LEVEL FOR  
EMERGENCY PLANNING  
ALASKA TSUNAMI**

SWM: \\mainfile-van\Projects\Active\3006332 NW Vancouver Island Tsunami Risk Assessment - Phase 2\95 GIS\3006332\_map\_5K\_InundationMapping\_1.aprx



- INUNDATION EXTENTS WITH SAFETY FACTOR
- INUNDATION EXTENTS WITHOUT SAFETY FACTOR
- MAJOR CONTOUR AT 10 m INTERVAL  
*labelled with elevation in metres*
- MINOR CONTOUR AT 2 m INTERVAL
- PAVED ROAD
- UNPAVED ROAD
- PEDESTRIAN WALKWAY / TRAIL
- FERRY ROUTE
- FIRST NATION ADMINISTRATIVE BOUNDARY
- MUNICIPAL BOUNDARY
- PROVINCIAL PARK

REFER TO INDEX MAP FOR COMPLETE NOTES. A SAFETY FACTOR WAS APPLIED TO OBTAIN THE TSUNAMI INUNDATION LEVEL FOR EMERGENCY PLANNING. EFFECTS OF CLIMATE CHANGE-INDUCED SEA LEVEL RISE NOT INCLUDED. OVERWATER HAZARDS SUCH AS STRONG CURRENT VELOCITY NOT SHOWN ON THE INUNDATION MAPS.



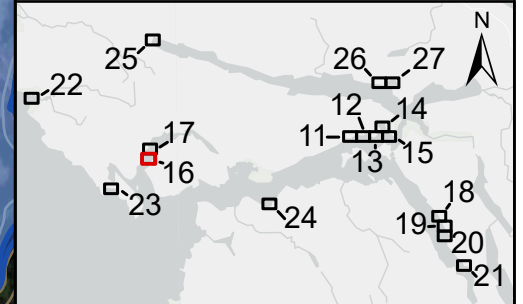
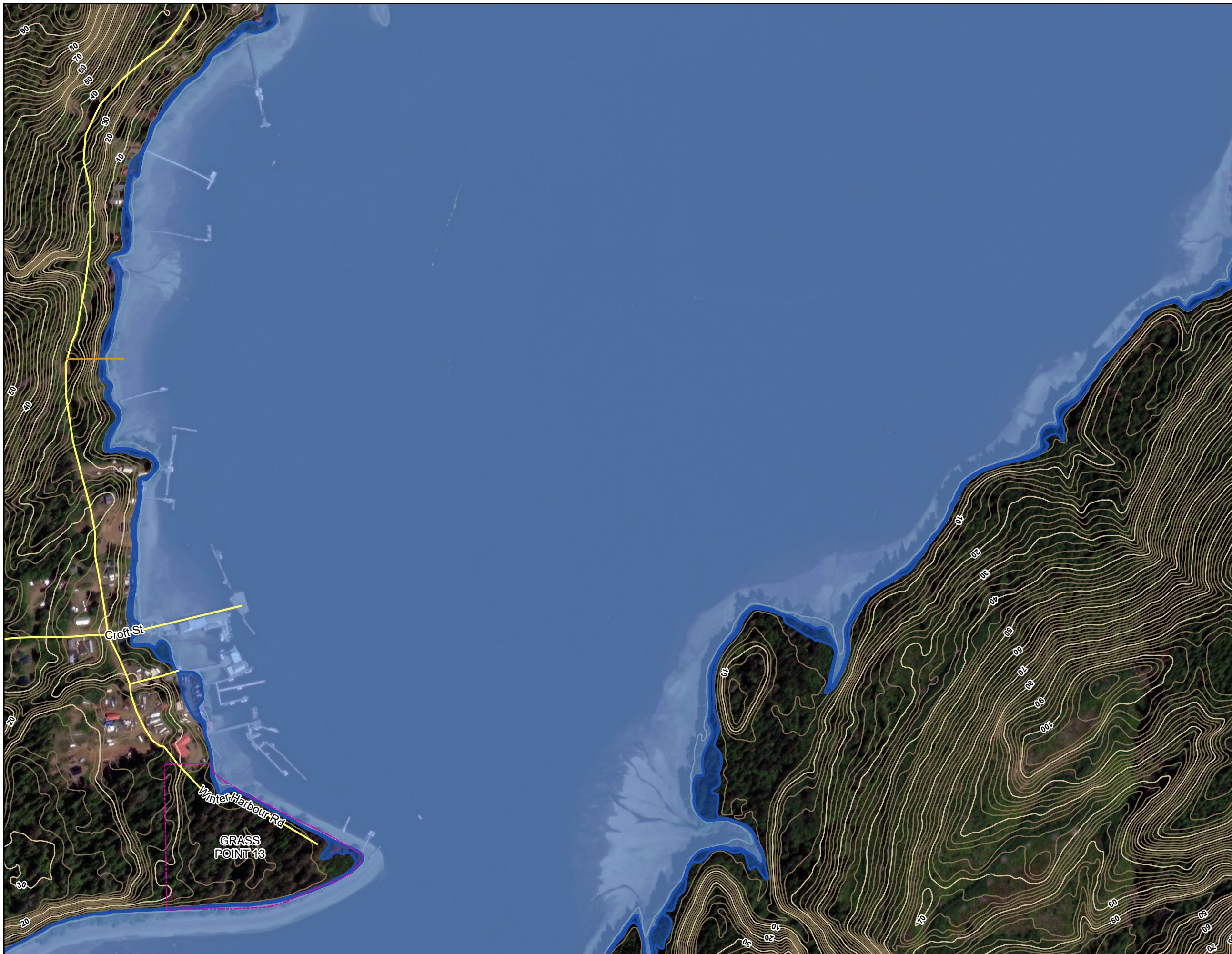
Coordinate System: NAD 1983 CSRS UTM ZONE 9N  
Units: METRES; Vertical Datum: CGVD2013

Engineer	PSG	GIS	SWM	Reviewer	GFL
Job Number	3006332		Date	11-MAY-2023	

**NORTHWEST VANCOUVER ISLAND  
TSUNAMI RISK ASSESSMENT PROJECT**

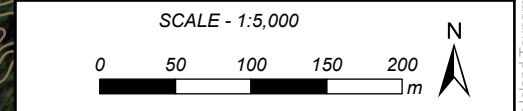
**QUATTISHE  
INUNDATION LEVEL FOR  
EMERGENCY PLANNING  
ALASKA TSUNAMI**

S:\NW\mainfile-van\Projects\Active\3006332 NW Vancouver Island Tsunami Risk Assessment - Phase 2\95 GIS\3006332\_map\_5K\_inundation\mapping\_1.aprx



- INUNDATION EXTENTS WITH SAFETY FACTOR
- INUNDATION EXTENTS WITHOUT SAFETY FACTOR
- MAJOR CONTOUR AT 10 m INTERVAL  
*labelled with elevation in metres*
- MINOR CONTOUR AT 2 m INTERVAL
- PAVED ROAD
- UNPAVED ROAD
- PEDESTRIAN WALKWAY / TRAIL
- FERRY ROUTE
- FIRST NATION ADMINISTRATIVE BOUNDARY
- MUNICIPAL BOUNDARY
- PROVINCIAL PARK

REFER TO INDEX MAP FOR COMPLETE NOTES. A SAFETY FACTOR WAS APPLIED TO OBTAIN THE TSUNAMI INUNDATION LEVEL FOR EMERGENCY PLANNING. EFFECTS OF CLIMATE CHANGE-INDUCED SEA LEVEL RISE NOT INCLUDED. OVERWATER HAZARDS SUCH AS STRONG CURRENT VELOCITY NOT SHOWN ON THE INUNDATION MAPS.



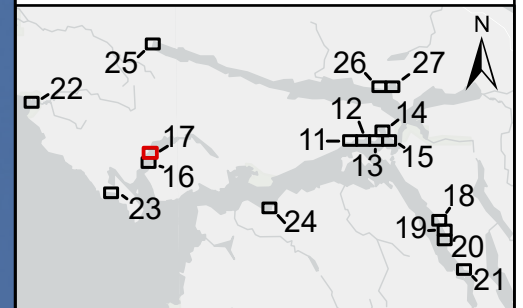
Coordinate System: NAD 1983 CSRS UTM ZONE 9N  
Units: METRES; Vertical Datum: CGVD2013

Engineer	PSG	GIS	SWM	Reviewer	GFL
Job Number	3006332		Date	11-MAY-2023	

**NORTHWEST VANCOUVER ISLAND  
TSUNAMI RISK ASSESSMENT PROJECT**

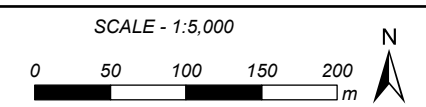
**WINTER HARBOUR SOUTH  
INUNDATION LEVEL FOR  
EMERGENCY PLANNING  
ALASKA TSUNAMI**

S:\NW\mainfile\van\Projects\Active\3006332 NW Vancouver Island Tsunami Risk Assessment - Phase 2\95 GIS\3006332\_map\_5K\_inundation\mapping\_1.aprx



- INUNDATION EXTENTS WITH SAFETY FACTOR
- INUNDATION EXTENTS WITHOUT SAFETY FACTOR
- MAJOR CONTOUR AT 10 m INTERVAL  
*labelled with elevation in metres*
- MINOR CONTOUR AT 2 m INTERVAL
- PAVED ROAD
- UNPAVED ROAD
- PEDESTRIAN WALKWAY / TRAIL
- FERRY ROUTE
- FIRST NATION ADMINISTRATIVE BOUNDARY
- MUNICIPAL BOUNDARY
- PROVINCIAL PARK

REFER TO INDEX MAP FOR COMPLETE NOTES. A SAFETY FACTOR WAS APPLIED TO OBTAIN THE TSUNAMI INUNDATION LEVEL FOR EMERGENCY PLANNING. EFFECTS OF CLIMATE CHANGE-INDUCED SEA LEVEL RISE NOT INCLUDED. OVERWATER HAZARDS SUCH AS STRONG CURRENT VELOCITY NOT SHOWN ON THE INUNDATION MAPS.



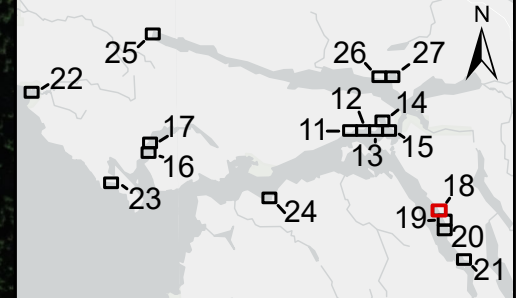
Coordinate System: NAD 1983 CSRS UTM ZONE 9N  
Units: METRES; Vertical Datum: CGVD2013

Engineer	PSG	GIS	SWM	Reviewer	GFL
Job Number	3006332		Date	11-MAY-2023	

**NORTHWEST VANCOUVER ISLAND  
TSUNAMI RISK ASSESSMENT PROJECT**

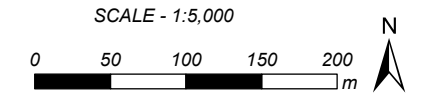
**WINTER HARBOUR NORTH  
INUNDATION LEVEL FOR  
EMERGENCY PLANNING  
ALASKA TSUNAMI**

S:\NW\mainfile-van\Projects\Active\3006332 NW Vancouver Island Tsunami Risk Assessment - Phase 2\95 GIS\3006332\_map\_5K\_InundationMapping\_1.aprx



- INUNDATION EXTENTS WITH SAFETY FACTOR
- INUNDATION EXTENTS WITHOUT SAFETY FACTOR
- MAJOR CONTOUR AT 10 m INTERVAL  
*labelled with elevation in metres*
- MINOR CONTOUR AT 2 m INTERVAL
- PAVED ROAD
- UNPAVED ROAD
- PEDESTRIAN WALKWAY / TRAIL
- FERRY ROUTE
- FIRST NATION ADMINISTRATIVE BOUNDARY
- MUNICIPAL BOUNDARY
- PROVINCIAL PARK

REFER TO INDEX MAP FOR COMPLETE NOTES. A SAFETY FACTOR WAS APPLIED TO OBTAIN THE TSUNAMI INUNDATION LEVEL FOR EMERGENCY PLANNING. EFFECTS OF CLIMATE CHANGE-INDUCED SEA LEVEL RISE NOT INCLUDED. OVERWATER HAZARDS SUCH AS STRONG CURRENT VELOCITY NOT SHOWN ON THE INUNDATION MAPS.



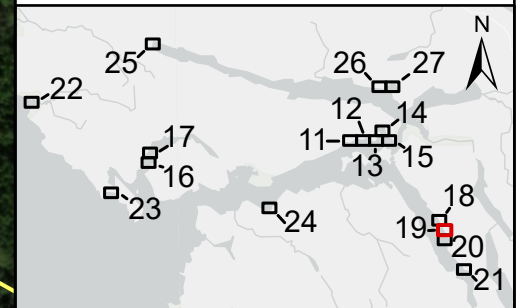
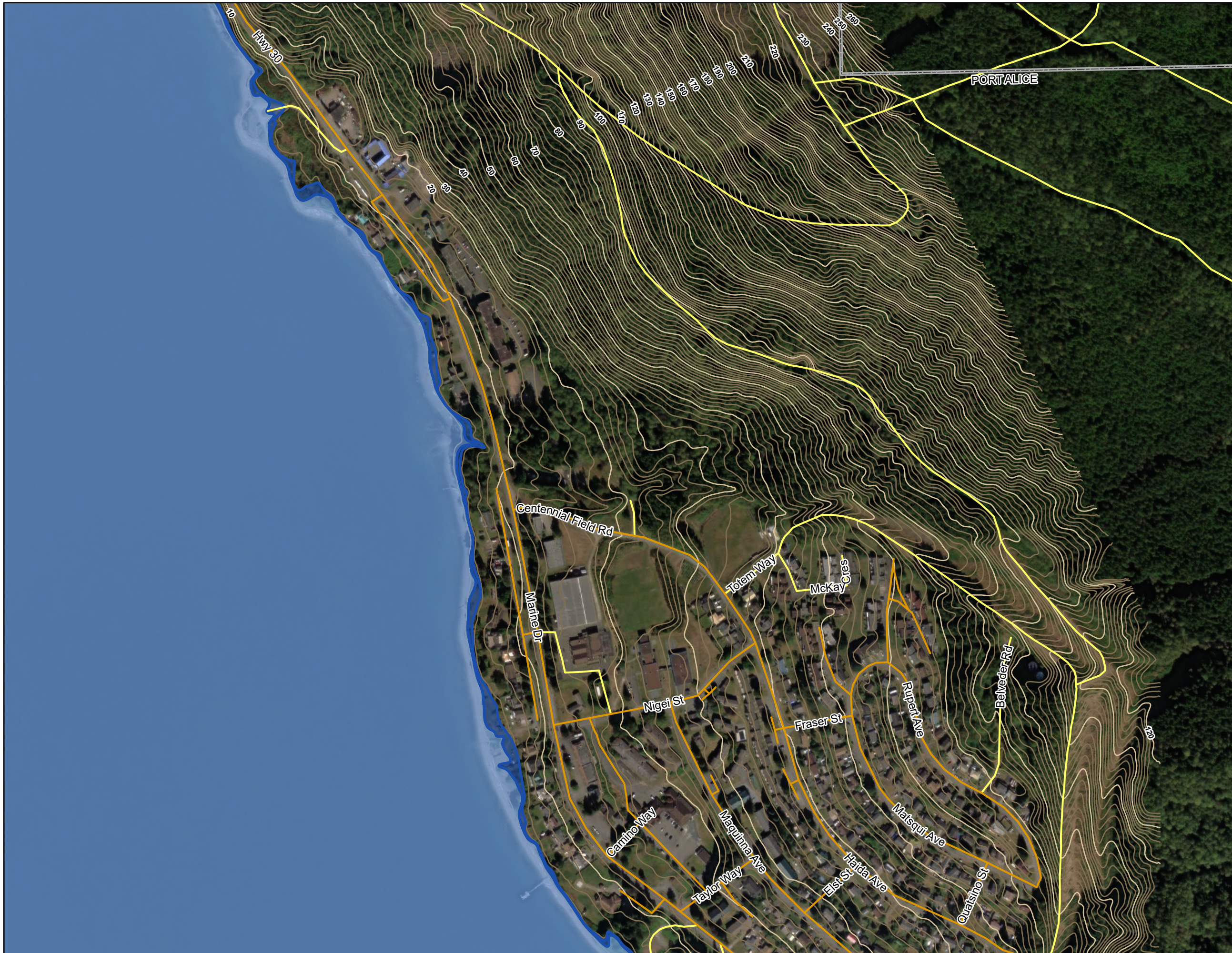
Coordinate System: NAD 1983 CSRS UTM ZONE 9N  
Units: METRES; Vertical Datum: CGVD2013

Engineer	PSG	GIS	SWM	Reviewer	GFL
Job Number	3006332		Date	11-MAY-2023	

**NORTHWEST VANCOUVER ISLAND  
TSUNAMI RISK ASSESSMENT PROJECT**

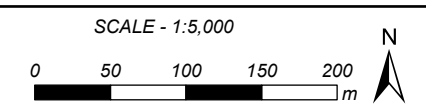
**JEUNE LANDING  
INUNDATION LEVEL FOR  
EMERGENCY PLANNING  
ALASKA TSUNAMI**

S:\NW\mainfile-van\Projects\Active\3006332 NW Vancouver Island Tsunami Risk Assessment - Phase 2\95 GIS\3006332\_map\_5K\_InundationMapping\_1.aprx



- INUNDATION EXTENTS WITH SAFETY FACTOR
- INUNDATION EXTENTS WITHOUT SAFETY FACTOR
- MAJOR CONTOUR AT 10 m INTERVAL  
*labelled with elevation in metres*
- MINOR CONTOUR AT 2 m INTERVAL
- PAVED ROAD
- UNPAVED ROAD
- PEDESTRIAN WALKWAY / TRAIL
- FERRY ROUTE
- FIRST NATION ADMINISTRATIVE BOUNDARY
- MUNICIPAL BOUNDARY
- PROVINCIAL PARK

REFER TO INDEX MAP FOR COMPLETE NOTES. A SAFETY FACTOR WAS APPLIED TO OBTAIN THE TSUNAMI INUNDATION LEVEL FOR EMERGENCY PLANNING. EFFECTS OF CLIMATE CHANGE-INDUCED SEA LEVEL RISE NOT INCLUDED. OVERWATER HAZARDS SUCH AS STRONG CURRENT VELOCITY NOT SHOWN ON THE INUNDATION MAPS.



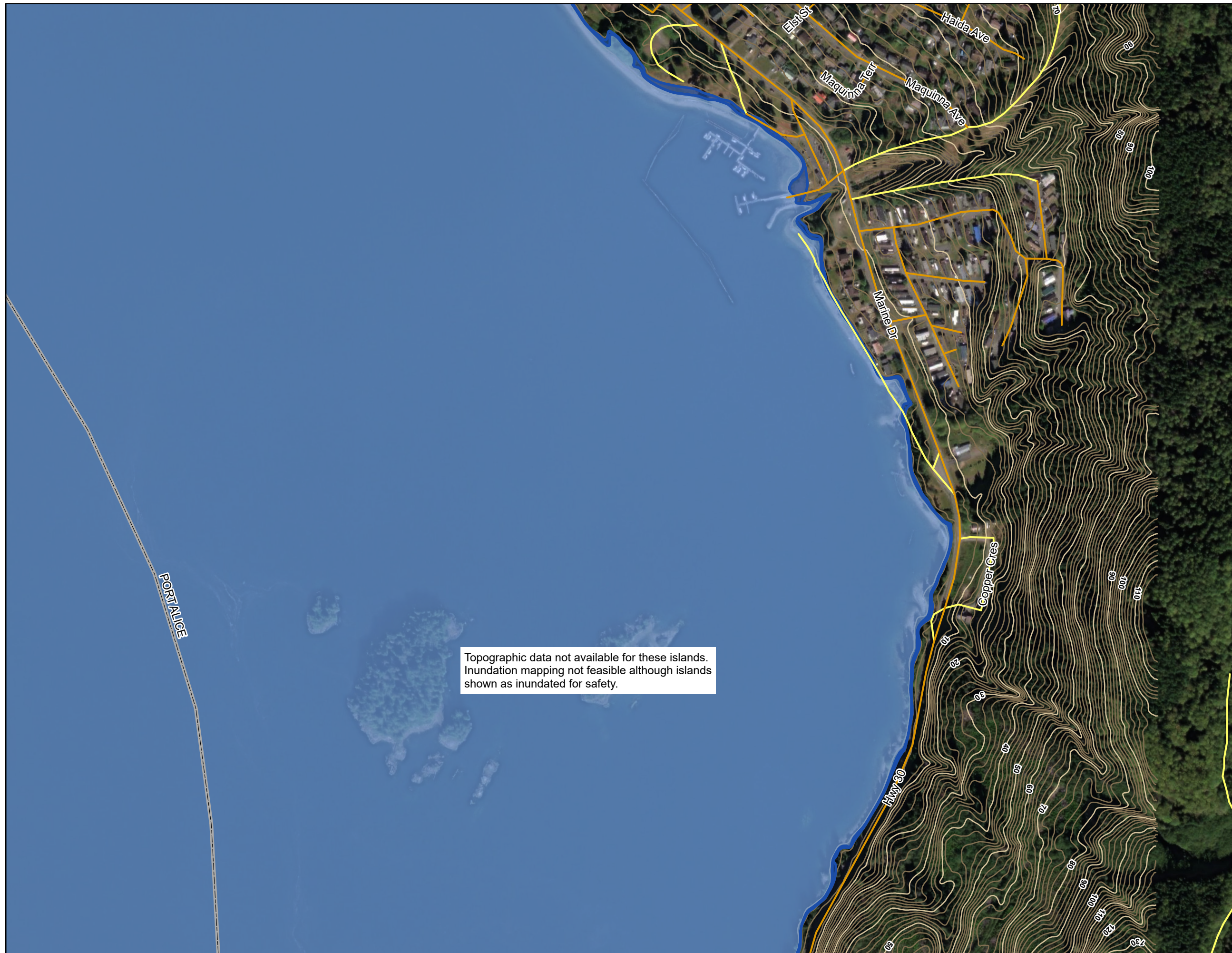
Coordinate System: NAD 1983 CSRS UTM ZONE 9N  
Units: METRES; Vertical Datum: CGVD2013

Engineer	PSG	GIS	SWM	Reviewer	GFL
Job Number	3006332		Date	11-MAY-2023	

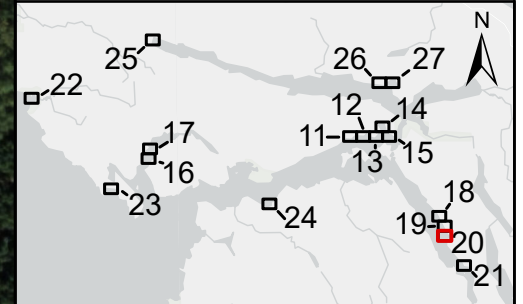
**NORTHWEST VANCOUVER ISLAND  
TSUNAMI RISK ASSESSMENT PROJECT**

**PORT ALICE  
INUNDATION LEVEL FOR  
EMERGENCY PLANNING  
ALASKA TSUNAMI**

SWM: \\mainfile-van\Projects\Active\3006332 NW Vancouver Island Tsunami Risk Assessment - Phase 2\95 GIS\3006332\_map\_5K\_inundation\mapping\_1.aprx

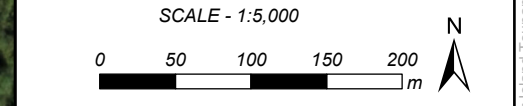


Topographic data not available for these islands. Inundation mapping not feasible although islands shown as inundated for safety.



- INUNDATION EXTENTS WITH SAFETY FACTOR
- INUNDATION EXTENTS WITHOUT SAFETY FACTOR
- MAJOR CONTOUR AT 10 m INTERVAL  
*labelled with elevation in metres*
- MINOR CONTOUR AT 2 m INTERVAL
- PAVED ROAD
- UNPAVED ROAD
- PEDESTRIAN WALKWAY / TRAIL
- FERRY ROUTE
- FIRST NATION ADMINISTRATIVE BOUNDARY
- MUNICIPAL BOUNDARY
- PROVINCIAL PARK

REFER TO INDEX MAP FOR COMPLETE NOTES. A SAFETY FACTOR WAS APPLIED TO OBTAIN THE TSUNAMI INUNDATION LEVEL FOR EMERGENCY PLANNING. EFFECTS OF CLIMATE CHANGE-INDUCED SEA LEVEL RISE NOT INCLUDED. OVERWATER HAZARDS SUCH AS STRONG CURRENT VELOCITY NOT SHOWN ON THE INUNDATION MAPS.



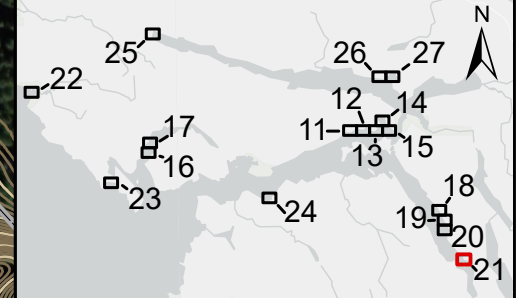
Coordinate System: NAD 1983 CSRS UTM ZONE 9N  
Units: METRES; Vertical Datum: CGVD2013

Engineer	PSG	GIS	SWM	Reviewer	GFL
Job Number	3006332		Date	11-MAY-2023	

**NORTHWEST VANCOUVER ISLAND  
TSUNAMI RISK ASSESSMENT PROJECT**

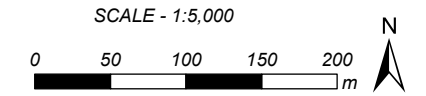
**RUMBLE BEACH  
INUNDATION LEVEL FOR  
EMERGENCY PLANNING  
ALASKA TSUNAMI**

S:\NW\mainfile-van\Projects\Active\3006332 NW Vancouver Island Tsunami Risk Assessment - Phase 2\95 GIS\3006332\_map\_5K\_inundation\mapping\_1.aprx



- INUNDATION EXTENTS WITH SAFETY FACTOR
- INUNDATION EXTENTS WITHOUT SAFETY FACTOR
- MAJOR CONTOUR AT 10 m INTERVAL  
*labelled with elevation in metres*
- MINOR CONTOUR AT 2 m INTERVAL
- PAVED ROAD
- UNPAVED ROAD
- PEDESTRIAN WALKWAY / TRAIL
- FERRY ROUTE
- FIRST NATION ADMINISTRATIVE BOUNDARY
- MUNICIPAL BOUNDARY
- PROVINCIAL PARK

REFER TO INDEX MAP FOR COMPLETE NOTES. A SAFETY FACTOR WAS APPLIED TO OBTAIN THE TSUNAMI INUNDATION LEVEL FOR EMERGENCY PLANNING. EFFECTS OF CLIMATE CHANGE-INDUCED SEA LEVEL RISE NOT INCLUDED. OVERWATER HAZARDS SUCH AS STRONG CURRENT VELOCITY NOT SHOWN ON THE INUNDATION MAPS.



Coordinate System: NAD 1983 CSRS UTM ZONE 9N  
Units: METRES; Vertical Datum: CGVD2013

Engineer	PSG	GIS	SWM	Reviewer	GFL
Job Number	3006332		Date	11-MAY-2023	

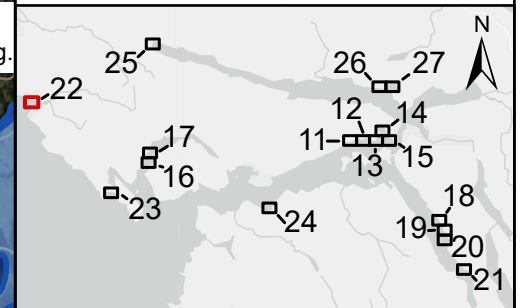
**NORTHWEST VANCOUVER ISLAND  
TSUNAMI RISK ASSESSMENT PROJECT**

**PORT ALICE TERMINAL  
INUNDATION LEVEL FOR  
EMERGENCY PLANNING  
ALASKA TSUNAMI**

S:\NW\mainfile-van\Projects\Active\3006332 NW Vancouver Island Tsunami Risk Assessment - Phase 2\95 GIS\3006332\_map\_5K\_inundation\mapping\_1.aprx

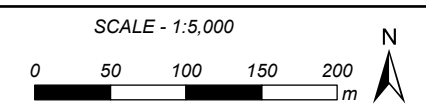


Tsunami inundation hazard exists beyond limit of inundation mapping.



- INUNDATION EXTENTS WITH SAFETY FACTOR
- INUNDATION EXTENTS WITHOUT SAFETY FACTOR
- MAJOR CONTOUR AT 10 m INTERVAL  
*labelled with elevation in metres*
- MINOR CONTOUR AT 2 m INTERVAL
- PAVED ROAD
- UNPAVED ROAD
- PEDESTRIAN WALKWAY / TRAIL
- FERRY ROUTE
- FIRST NATION ADMINISTRATIVE BOUNDARY
- MUNICIPAL BOUNDARY
- PROVINCIAL PARK

REFER TO INDEX MAP FOR COMPLETE NOTES. A SAFETY FACTOR WAS APPLIED TO OBTAIN THE TSUNAMI INUNDATION LEVEL FOR EMERGENCY PLANNING. EFFECTS OF CLIMATE CHANGE-INDUCED SEA LEVEL RISE NOT INCLUDED. OVERWATER HAZARDS SUCH AS STRONG CURRENT VELOCITY NOT SHOWN ON THE INUNDATION MAPS.



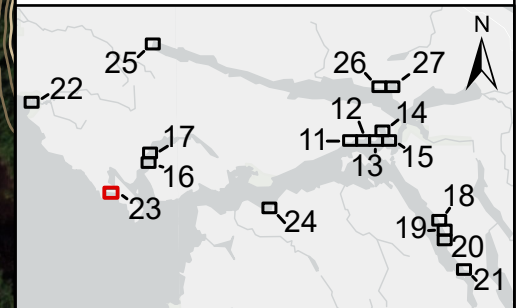
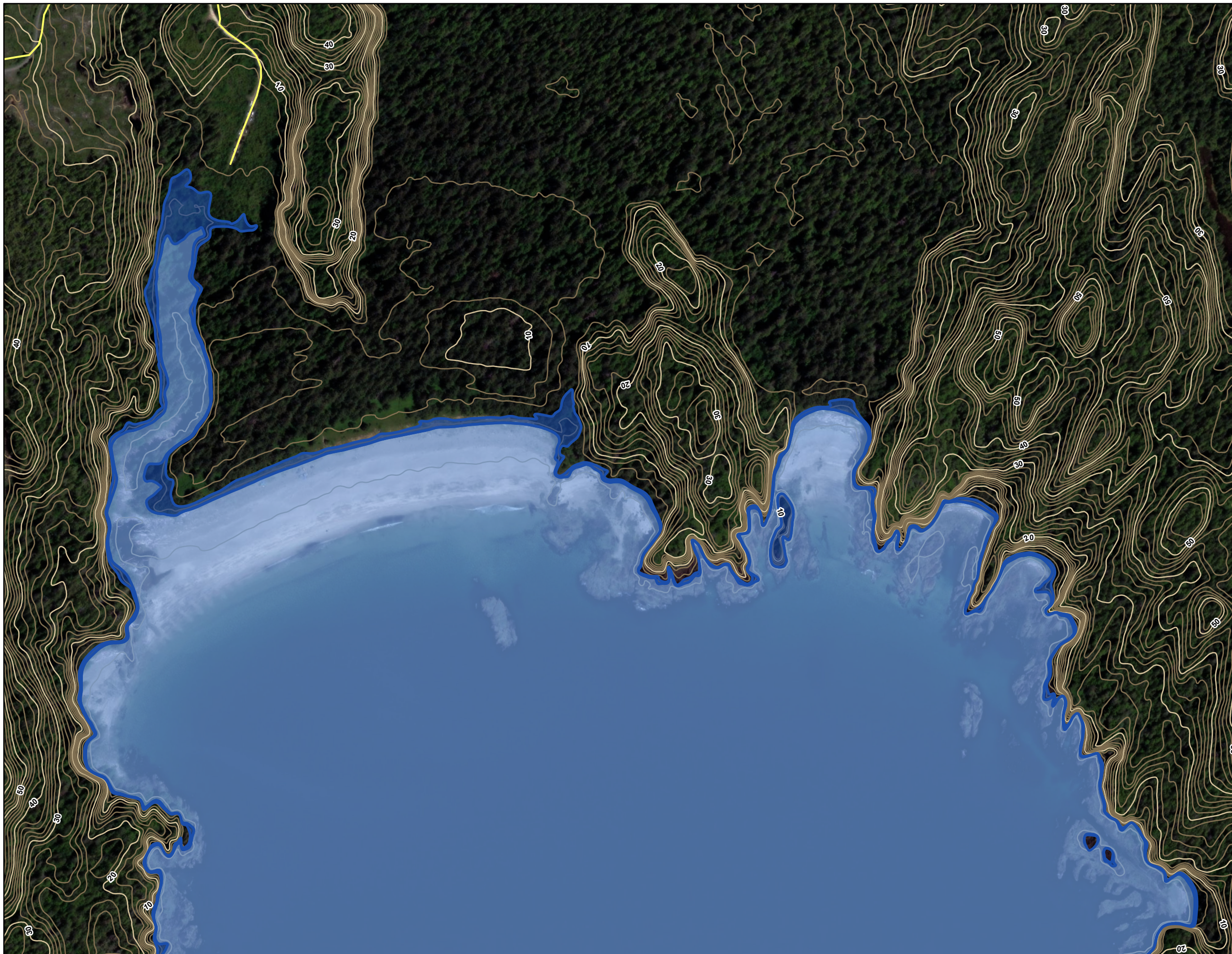
Coordinate System: NAD 1983 CSRS UTM ZONE 9N  
Units: METRES; Vertical Datum: CGVD2013

Engineer	PSG	GIS	SWM	Reviewer	GFL
Job Number	3006332			Date	11-MAY-2023

**NORTHWEST VANCOUVER ISLAND  
TSUNAMI RISK ASSESSMENT PROJECT**

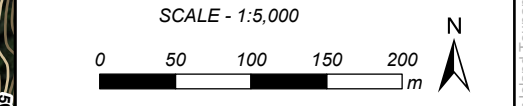
**RAFT COVE  
INUNDATION LEVEL FOR  
EMERGENCY PLANNING  
ALASKA TSUNAMI**

SWM: \\mainfile-van\Projects\Active\3006332 NW Vancouver Island Tsunami Risk Assessment - Phase 2\95 GIS\3006332\_map\_5K\_InundationMapping\_1.aprx



- INUNDATION EXTENTS WITH SAFETY FACTOR
- INUNDATION EXTENTS WITHOUT SAFETY FACTOR
- MAJOR CONTOUR AT 10 m INTERVAL  
*labelled with elevation in metres*
- MINOR CONTOUR AT 2 m INTERVAL
- PAVED ROAD
- UNPAVED ROAD
- PEDESTRIAN WALKWAY / TRAIL
- FERRY ROUTE
- FIRST NATION ADMINISTRATIVE BOUNDARY
- MUNICIPAL BOUNDARY
- PROVINCIAL PARK

REFER TO INDEX MAP FOR COMPLETE NOTES. A SAFETY FACTOR WAS APPLIED TO OBTAIN THE TSUNAMI INUNDATION LEVEL FOR EMERGENCY PLANNING. EFFECTS OF CLIMATE CHANGE-INDUCED SEA LEVEL RISE NOT INCLUDED. OVERWATER HAZARDS SUCH AS STRONG CURRENT VELOCITY NOT SHOWN ON THE INUNDATION MAPS.



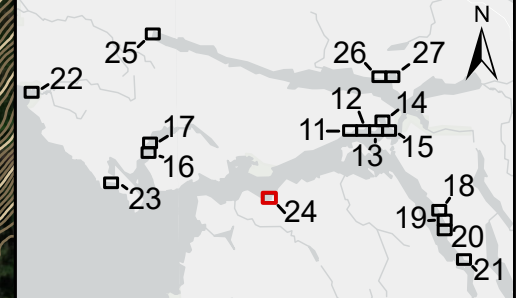
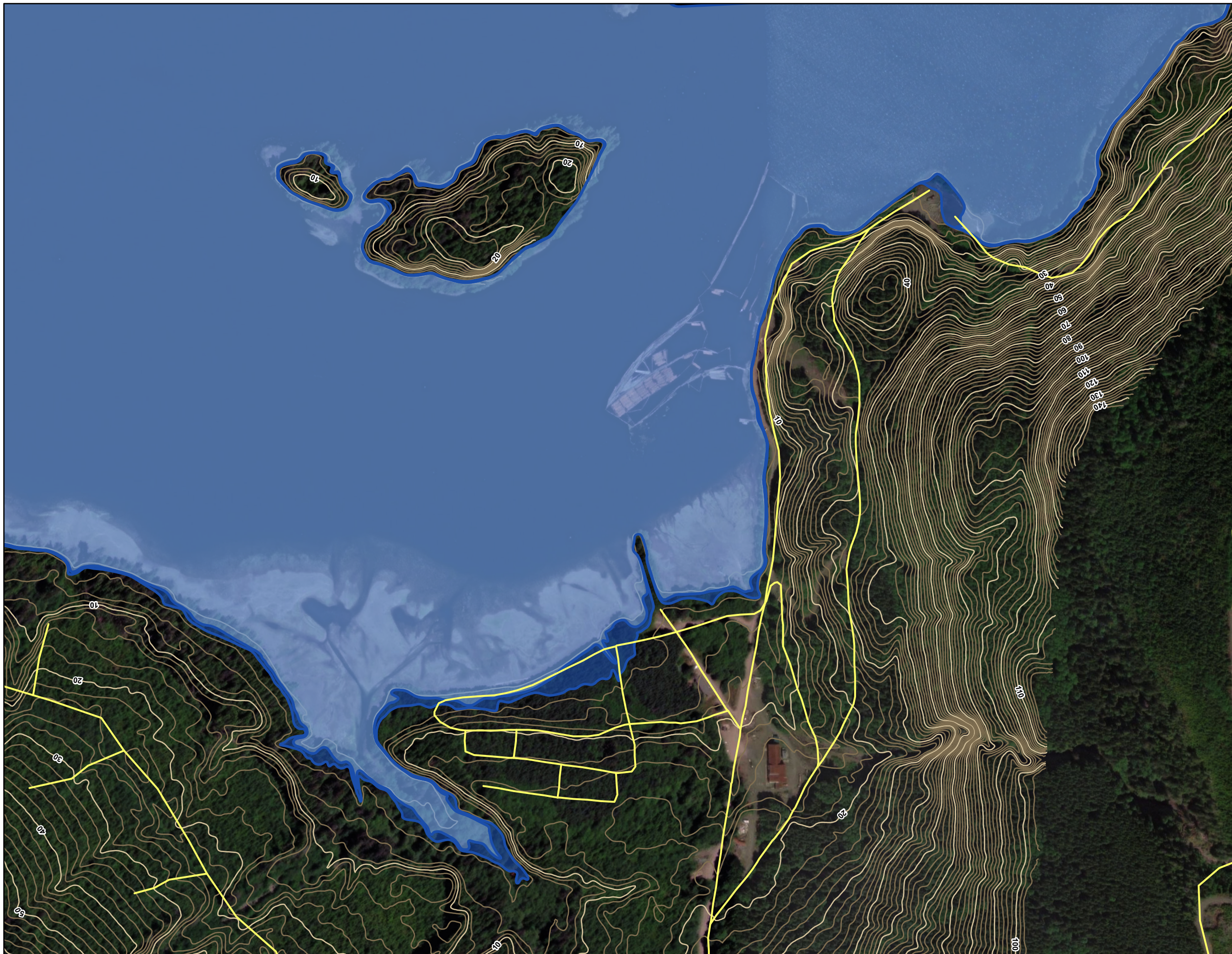
Coordinate System: NAD 1983 CSRS UTM ZONE 9N  
Units: METRES; Vertical Datum: CGVD2013

Engineer	PSG	GIS	SWM	Reviewer	GFL
Job Number	3006332		Date	11-MAY-2023	

**NORTHWEST VANCOUVER ISLAND  
TSUNAMI RISK ASSESSMENT PROJECT**

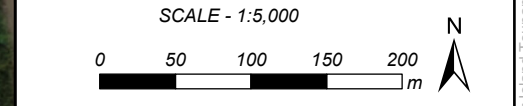
**GRANT BAY  
INUNDATION LEVEL FOR  
EMERGENCY PLANNING  
ALASKA TSUNAMI**

SWM: \\mainfile-van\Projects\Active\3006332 NW Vancouver Island Tsunami Risk Assessment - Phase 2\95 GIS\3006332\_map\_5K\_InundationMapping\_1.aprx



- INUNDATION EXTENTS WITH SAFETY FACTOR
- INUNDATION EXTENTS WITHOUT SAFETY FACTOR
- MAJOR CONTOUR AT 10 m INTERVAL  
*labelled with elevation in metres*
- MINOR CONTOUR AT 2 m INTERVAL
- PAVED ROAD
- UNPAVED ROAD
- PEDESTRIAN WALKWAY / TRAIL
- FERRY ROUTE
- FIRST NATION ADMINISTRATIVE BOUNDARY
- MUNICIPAL BOUNDARY
- PROVINCIAL PARK

REFER TO INDEX MAP FOR COMPLETE NOTES. A SAFETY FACTOR WAS APPLIED TO OBTAIN THE TSUNAMI INUNDATION LEVEL FOR EMERGENCY PLANNING. EFFECTS OF CLIMATE CHANGE-INDUCED SEA LEVEL RISE NOT INCLUDED. OVERWATER HAZARDS SUCH AS STRONG CURRENT VELOCITY NOT SHOWN ON THE INUNDATION MAPS.



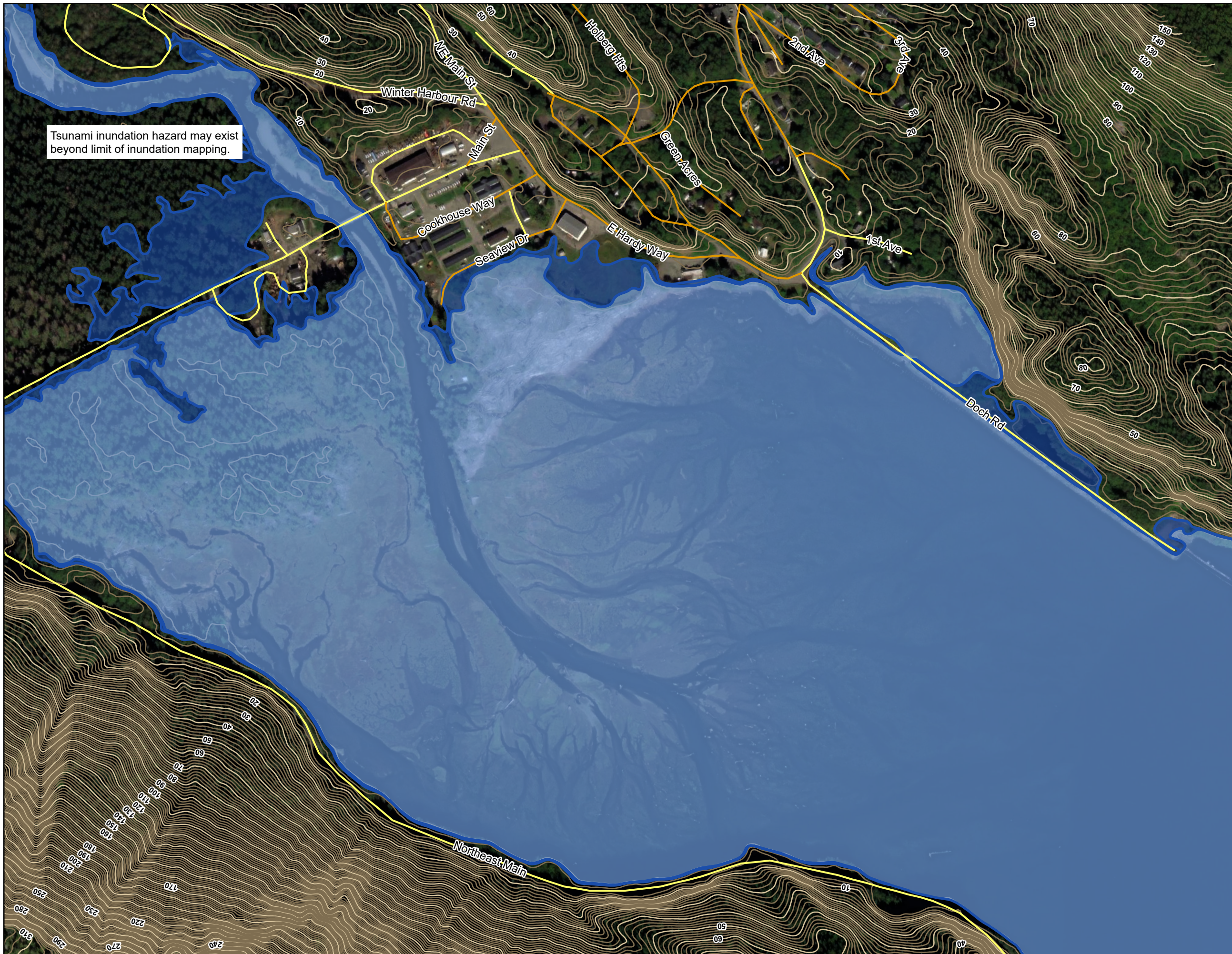
Coordinate System: NAD 1983 CSRS UTM ZONE 9N  
Units: METRES; Vertical Datum: CGVD2013

Engineer	PSG	GIS	SWM	Reviewer	GFL
Job Number	3006332		Date	11-MAY-2023	

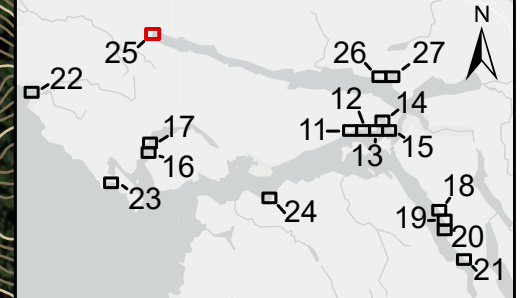
**NORTHWEST VANCOUVER ISLAND  
TSUNAMI RISK ASSESSMENT PROJECT**

**MAHATTA RIVER  
INUNDATION LEVEL FOR  
EMERGENCY PLANNING  
ALASKA TSUNAMI**

SWM: \\mainfile-van\Projects\Active\3006332 NW Vancouver Island Tsunami Risk Assessment - Phase 2\95 GIS\3006332\_map\_5K\_inundation\mapping\_1.aprx

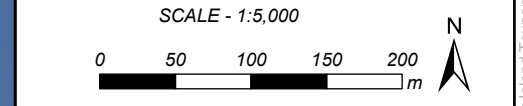


Tsunami inundation hazard may exist beyond limit of inundation mapping.



- INUNDATION EXTENTS WITH SAFETY FACTOR
- INUNDATION EXTENTS WITHOUT SAFETY FACTOR
- MAJOR CONTOUR AT 10 m INTERVAL  
*labelled with elevation in metres*
- MINOR CONTOUR AT 2 m INTERVAL
- PAVED ROAD
- UNPAVED ROAD
- PEDESTRIAN WALKWAY / TRAIL
- FERRY ROUTE
- FIRST NATION ADMINISTRATIVE BOUNDARY
- MUNICIPAL BOUNDARY
- PROVINCIAL PARK

REFER TO INDEX MAP FOR COMPLETE NOTES. A SAFETY FACTOR WAS APPLIED TO OBTAIN THE TSUNAMI INUNDATION LEVEL FOR EMERGENCY PLANNING. EFFECTS OF CLIMATE CHANGE-INDUCED SEA LEVEL RISE NOT INCLUDED. OVERWATER HAZARDS SUCH AS STRONG CURRENT VELOCITY NOT SHOWN ON THE INUNDATION MAPS.



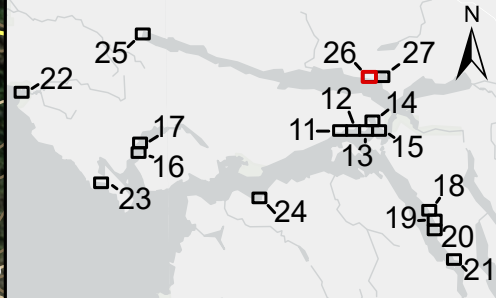
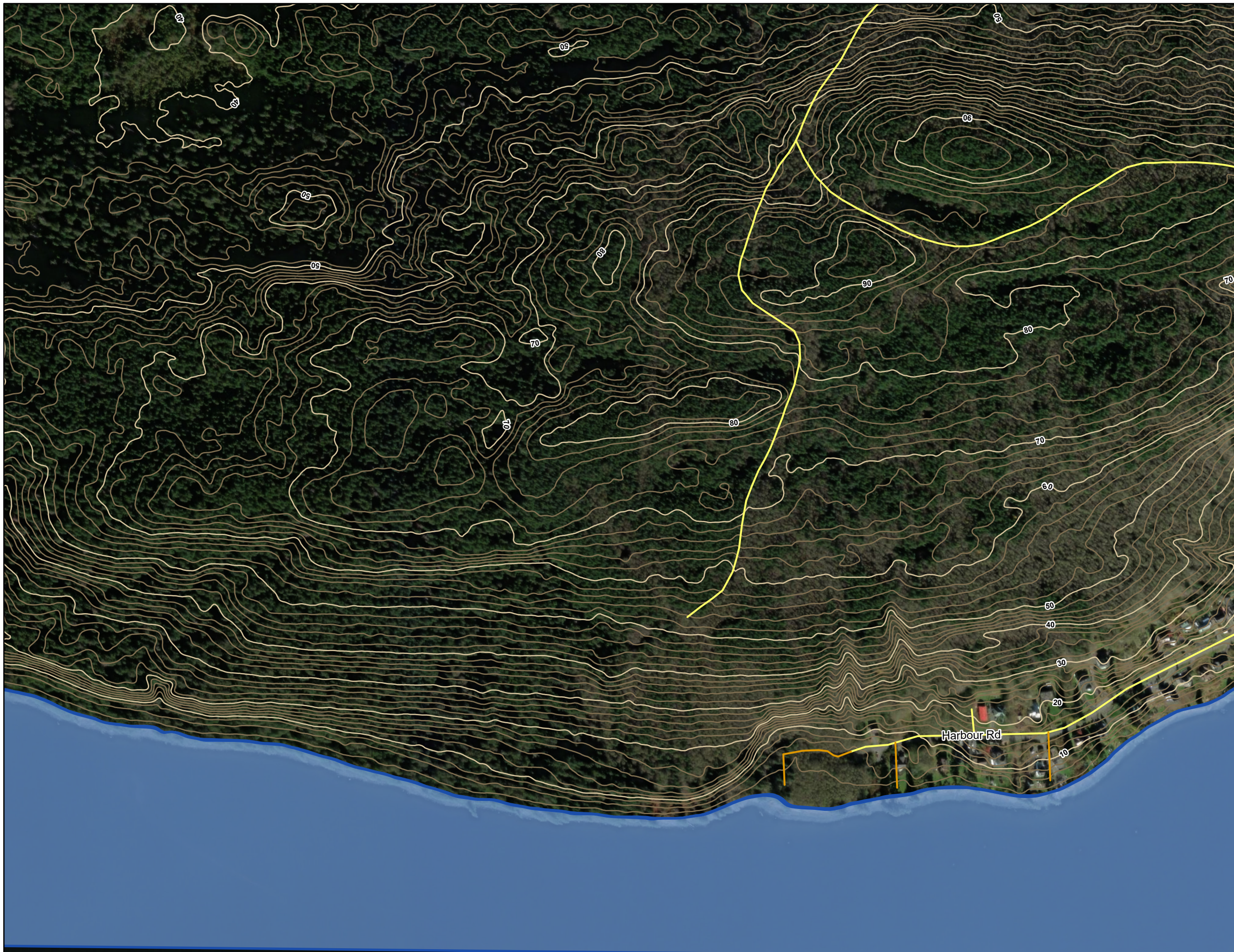
Coordinate System: NAD 1983 CSRS UTM ZONE 9N  
Units: METRES; Vertical Datum: CGVD2013

Engineer	PSG	GIS	SWM	Reviewer	GFL
Job Number	3006332		Date	11-MAY-2023	

**NORTHWEST VANCOUVER ISLAND  
TSUNAMI RISK ASSESSMENT PROJECT**

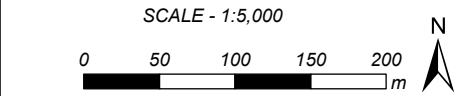
**HOLBERG  
INUNDATION LEVEL FOR  
EMERGENCY PLANNING  
ALASKA TSUNAMI**

SWM: \mainfile\van\Projects\Active\3006332 NW Vancouver Island Tsunami Risk Assessment - Phase 2\95 GIS\3006332\_map\_5K\_InundationMapping\_1.aprx



- INUNDATION EXTENTS WITH SAFETY FACTOR
- INUNDATION EXTENTS WITHOUT SAFETY FACTOR
- MAJOR CONTOUR AT 10 m INTERVAL  
*labelled with elevation in metres*
- MINOR CONTOUR AT 2 m INTERVAL
- PAVED ROAD
- UNPAVED ROAD
- PEDESTRIAN WALKWAY / TRAIL
- FERRY ROUTE
- FIRST NATION ADMINISTRATIVE BOUNDARY
- MUNICIPAL BOUNDARY
- PROVINCIAL PARK

REFER TO INDEX MAP FOR COMPLETE NOTES. A SAFETY FACTOR WAS APPLIED TO OBTAIN THE TSUNAMI INUNDATION LEVEL FOR EMERGENCY PLANNING. EFFECTS OF CLIMATE CHANGE-INDUCED SEA LEVEL RISE NOT INCLUDED. OVERWATER HAZARDS SUCH AS STRONG CURRENT VELOCITY NOT SHOWN ON THE INUNDATION MAPS.



Coordinate System: NAD 1983 CSRS UTM ZONE 9N  
Units: METRES; Vertical Datum: CGVD2013

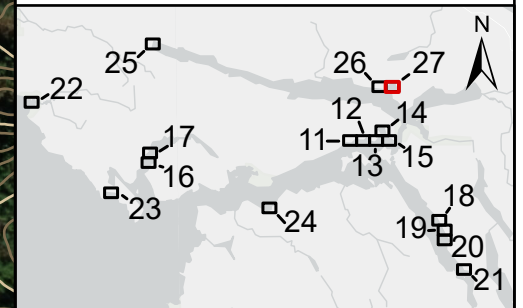
Engineer	PSG	GIS	SWM	Reviewer	GFL
----------	-----	-----	-----	----------	-----

Job Number	Date
3006332	11-MAY-2023

**NORTHWEST VANCOUVER ISLAND  
TSUNAMI RISK ASSESSMENT PROJECT**

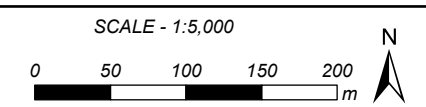
**COAL HARBOUR WEST  
INUNDATION LEVEL FOR  
EMERGENCY PLANNING  
ALASKA TSUNAMI**

S:\NW\mainfile-van\Projects\Active\3006332 NW Vancouver Island Tsunami Risk Assessment - Phase 2\95 GIS\3006332\_map\_5K\_inundation\mapping\_1.aprx



- INUNDATION EXTENTS WITH SAFETY FACTOR
- INUNDATION EXTENTS WITHOUT SAFETY FACTOR
- MAJOR CONTOUR AT 10 m INTERVAL  
*labelled with elevation in metres*
- MINOR CONTOUR AT 2 m INTERVAL
- PAVED ROAD
- UNPAVED ROAD
- PEDESTRIAN WALKWAY / TRAIL
- FERRY ROUTE
- FIRST NATION ADMINISTRATIVE BOUNDARY
- MUNICIPAL BOUNDARY
- PROVINCIAL PARK

REFER TO INDEX MAP FOR COMPLETE NOTES. A SAFETY FACTOR WAS APPLIED TO OBTAIN THE TSUNAMI INUNDATION LEVEL FOR EMERGENCY PLANNING. EFFECTS OF CLIMATE CHANGE-INDUCED SEA LEVEL RISE NOT INCLUDED. OVERWATER HAZARDS SUCH AS STRONG CURRENT VELOCITY NOT SHOWN ON THE INUNDATION MAPS.



Coordinate System: NAD 1983 CSRS UTM ZONE 9N  
Units: METRES; Vertical Datum: CGVD2013

Engineer	PSG	GIS	SWM	Reviewer	GFL
Job Number	3006332			Date	11-MAY-2023

**NORTHWEST VANCOUVER ISLAND  
TSUNAMI RISK ASSESSMENT PROJECT**

**COAL HARBOUR EAST  
INUNDATION LEVEL FOR  
EMERGENCY PLANNING  
ALASKA TSUNAMI**

S:\NW\mainfile-van\Projects\Active\3006332 NW Vancouver Island Tsunami Risk Assessment - Phase 2\95 GIS\3006332\_map\_5K\_inundation\mapping\_1.aprx