

**Read Island and Sourrounding Islands
Community Wildfire Protection Plan
Updated Fire Risk**



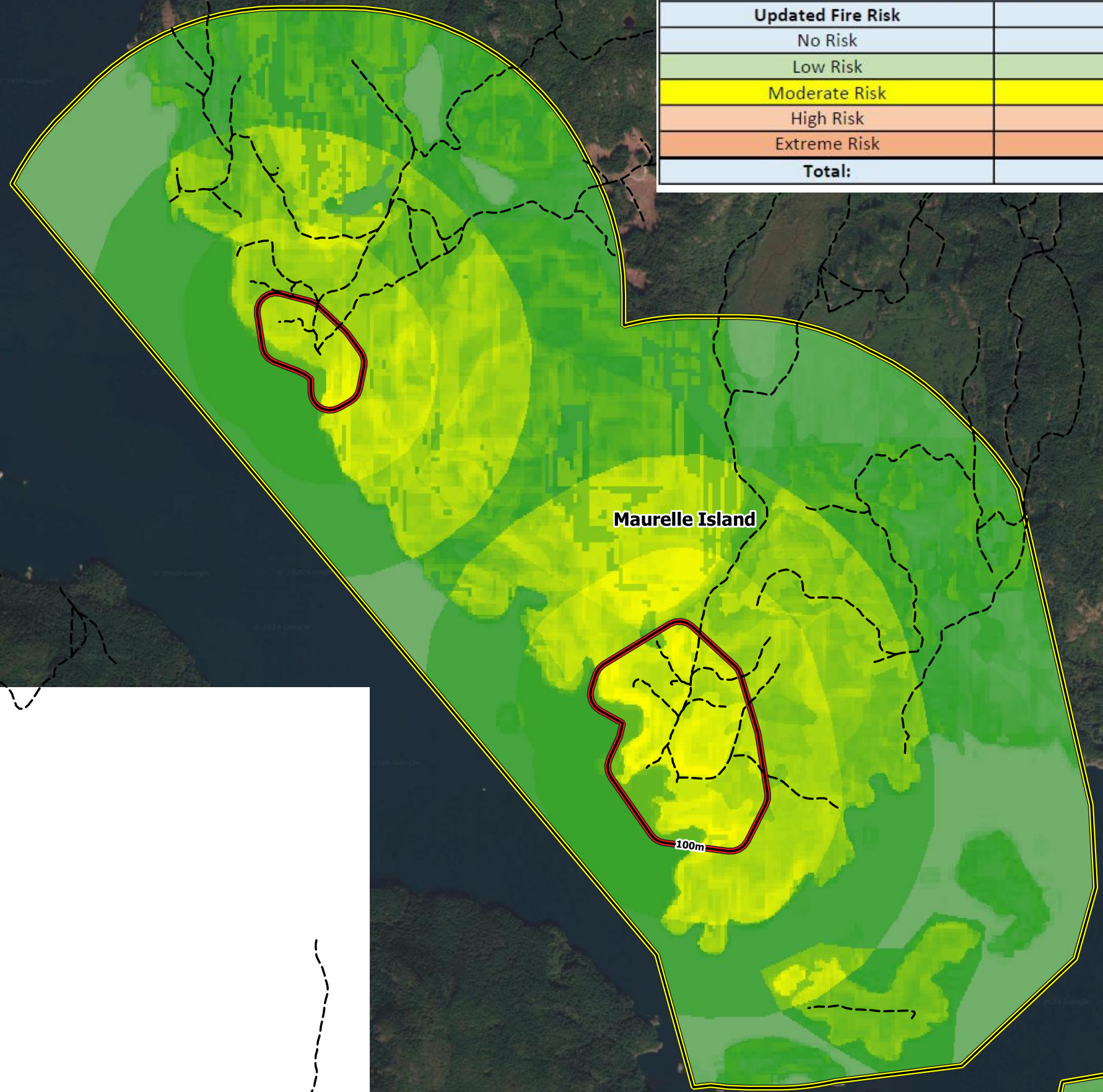
Scale: 1:25000
Strathcona Regional District
Electoral Area C
Maurelle Island



Legend

- Digital Road Atlas
- Gravel
- Unknown, Deact
- Paved
- CWPP AOI
- 100m Buffer
- Fire Risk Updated
- 0.1 (No Risk)
- 3.9 (Low)
- 6.9 (Moderate)
- 8.9 (High)
- 9 + (Extreme)
- Google Satellite

Maurelle Island Updated Fire Risk Summary	
Updated Fire Risk	Area (ha)
No Risk	0
Low Risk	492
Moderate Risk	1,188
High Risk	36
Extreme Risk	0
Total:	1,716



Date: 05/27/2020
Author: Colby Day, RFT
Coordinate System: BC Albers NAD83

