

**Gold River Community Wildfire
Protection Plan
Existing Fuel Types South**

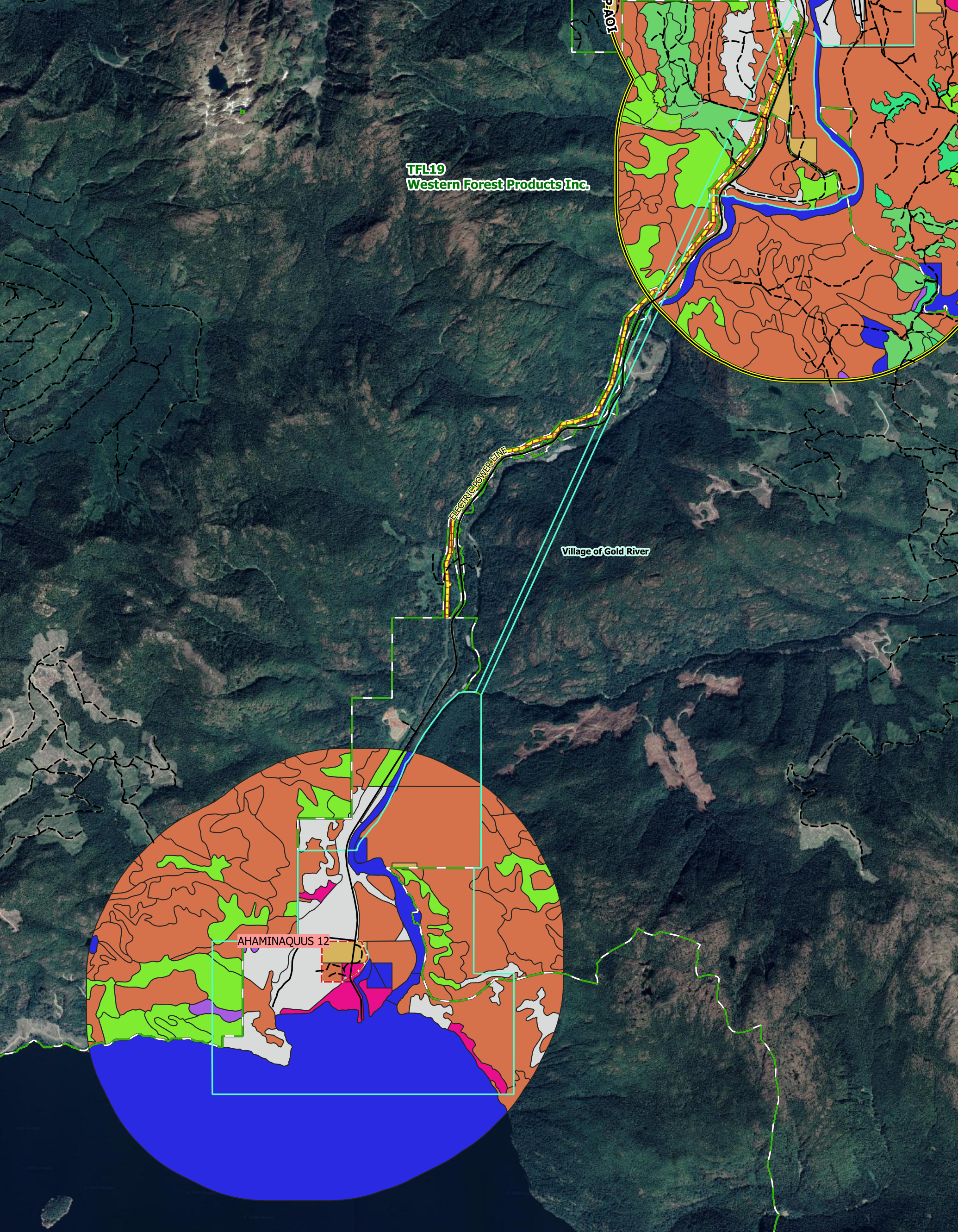
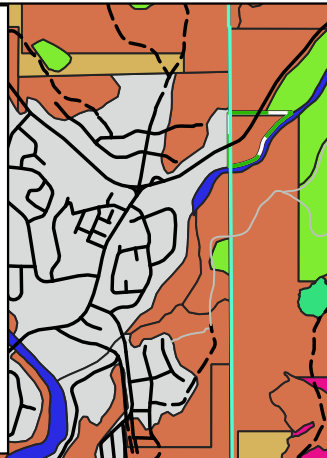


Scale: 1:25000
Strathcona Regional District
Electoral Area A
Village of Gold River



Legend

Digital Road Atlas	Indian Reserves	C-7	S-3
--- Gravel	Municipality	D-1/2	W
— Unknown, Deact	Fuel Type Existing	M-1/2	N
— Paved	C-1	O-1a/b	S-1
CWPP AOI	C-2	C-3	S-2
Crown Utilities	C-3	C-5	
Tree Farm Licence			



© 25050075@1000 m



Date: 05/09/2020
Author: Colby Day, RFT
Coordinate System: BC Albers NAD83