

This document contains the Executive Summary, Summary of Recommendations, and key CWPP maps (Area of Interest, Local Wildfire Risk Analysis, and Land Ownership Maps).

The purpose of this document is to provide a brief summary of the analysis, results, and recommendations associated with the 2020 Community Wildfire Protection Plan. Refer to the complete CWPP document and associated maps for more detailed information and references.

The Summary of Recommendations in this document are organized by the Level of Priority. In the complete CWPP document, the Summary of Recommendations are organized in the order in which they appear in the document. The numbering is consistent across all documents.

# Nuchatlaht First Nation Community Wildfire Protection Plan



**Submitted to:**

Helena Michael – Acting Band Manager, Nuchatlaht First Nation  
Shaun Koopman – Emergency Program Coordinator, Strathcona Regional District

**Submitted by:**

SuavAir Aerial Imaging  
[info@suavair.com](mailto:info@suavair.com)  
250-830-8849

June 26, 2020



## ACKNOWLEDGMENTS

This plan was prepared by Colin Filliter, RPF and Cynthia Lu, RPF of SuavAir Aerial Imaging Inc. Colby Day, RFT completed the spatial data analysis and mapping. The authors would like to thank and acknowledge the following people for their assistance and participation in preparing the Nuchatlaht Community Wildfire Protection Plan:

Helena Michael – Acting Band Manager, Nuchatlaht First Nation  
Anabel Jarry – Lands and Resources Department, Nuchatlaht First Nation  
Shaun Koopman – Emergency Program Coordinator, Strathcona Regional District  
Scott Boyd – GIS Analyst, Western Forest Products Inc.  
Ben Boghean, Todd Flanagan, Raphael Jamin – North Island Fire Zone, BC Wildfire Service

This report was made possible by the support of the Union of BC Municipalities through the Community Resiliency Investment grant.

## REGISTERED PROFESSIONAL SIGN & SEAL

Colin Filliter, RPF # SuavAir Aerial Imaging	Cynthia Lu, RPF #4923 SuavAir Aerial Imaging
Date Signed: June 25, 2020	Date Signed: June 25, 2020

## EXECUTIVE SUMMARY

The Nuchatlaht First Nation Community Wildfire Protection Plan (CWPP) was completed under the framework established by the Community Resilience Investment program, administered by the Union of BC Municipalities. The area of interest is the wildland urban interface (WUI) surrounding the Nuchatlaht First Nation community at Oclucje, at the head of Esperanza Inlet on the west coast of Vancouver Island. Oclucje is a remote community accessed by boat or by Fair Harbour Forest Service Road west of the Village of Zeballos. The purpose of this CWPP is to identify the wildfire risks surrounding the community, potential consequences of a wildfire to the community, and to recommend possible ways to reduce the risk.

The fuel types in the area are predominantly a mixture of mature conifer forests and recently harvested cutblocks. Previous fire history in the area indicates a low number of ignitions from both human and lightning causes. The local wildfire threat classification is Moderate to High. The local wildfire risk classification ranges from Low to High, with higher risk areas associated with fuels in close proximity (within 500m) of the community.

The community's remote location, limited communication networks, and distance from other resources creates unique challenges. The recommendations in this report are summarized in the table below. The recommendations are based on a review of best practices from other jurisdictions, gaps identified through community engagement, the local wildfire risk analysis, prevention of human-caused ignitions, and integration of FireSmart program principles. FireSmart is a national initiative to educate and empower the public on what can be done to protect their families, properties, and communities from wildfire. In March 2020, Local FireSmart Representatives completed a Community Hazard Assessment report for Oclucje.

Fuel management activities (surface and ladder fuel removal) should focus on the first 100 meters of forested areas near the community. FireSmart practices should start with the first 10 meters around each structure in the community. Additional fuel management treatment areas are recommended on provincial crown land within TFL 19 and along road/transmission line rights-of-way. In addition to fuel management, community awareness and education play a critical role in reducing the wildfire risk. Community awareness focuses on FireSmart principles, understanding fire use restrictions, emergency preparedness, and regularly sharing fire safety related information.

The BC Wildfire Service provides wildfire response services on the provincial Crown land surrounding the community. Oclucje is not served by a local fire department. Due to the small number of full-time residents, the capacity for local fire response is limited. Recommendations in this plan aim to improve the community's emergency and evacuation preparedness.

This plan makes 29 recommendations to the Nuchatlaht First Nation and Strathcona Regional District. The recommendations should be further prioritized by the community depending on local strengths, opportunities, and the availability of human, financial, and physical resources. At minimum, the plan should be revisited every five years to assess the progress and relevance of previous recommendations and for the continual improvement of wildfire protection planning as more information becomes available.

## HIGH PRIORITY RECOMMENDATIONS

No.	Priority	Objective	Recommendation / Next Steps	Responsibility
1.	High	To develop a comprehensive Community Emergency Response Plan.	Complete a comprehensive Community Emergency Preparedness and Response Plan. Ensure the response plan considers the effects of wildfire emergencies and addresses the potential impacts of WUI fires, poor air quality, evacuation plans, extended power outages, and road access concerns.	NFN with support from FNESS
Rationale: Best practice recommendation based on gaps identified during CWPP engagement. Emergency planning and evacuation planning are critical for community safety.				
2.	High	To improve dialogue between the Village and forest tenure holders regarding plans and strategies for addressing fire hazard risk and abatement within the WUI.	Meet with the forest tenure holder (Western Forest Products Inc.) to understand post-harvesting fuel risk and risk mitigation strategies within the WUI.  Emphasize the importance of fuel hazard management in cut blocks within the WUI (2km around the community). If there are specific concerns with fuel hazard in a particular cutblock within the WUI, contact the BCWS North Island Fire Zone.	NFN, with support from BCWS North Island Fire Zone.  Inter-agency cooperation is a shared responsibility with industrial operators.
Rationale: CWPP engagement with NFN noted limited communications between WFP and NFN on industrial activities surrounding Oclucje. Inter-agency cooperation and communication is one of the FireSmart disciplines.				
3.	High	To improve emergency preparedness and evacuation planning for the community during wildfire emergencies.	Implement a regular system for tracking the numbers of elders, children, and others who may need assistance in the event of an emergency evacuation.	NFN
Rationale: Based on CWPP engagement with NFN and discussion on previous emergencies and voluntary evacuations. A process is recommended because travel/access resources may be periodically limited, or external support may need to be called upon in extreme cases.				
4.	High	To mitigate the impact of prolonged or extensive power outages during emergency events.	In addition to the procurement of portable diesel generators (currently in progress), review the feasibility of other more permanent secondary power sources (i.e.: generators, solar panels, etc.).	NFN with support from FNESS or SRD

Rationale: Based on expressed concerns regarding reliable backup power and power outage restoration during CWPP engagement.				
5.	High	To reduce the fuel hazard in identified treatment areas (high risk areas within 500m of the community, or along FSR right-of-way).	Work with a qualified forest professional to develop and implement site specific assessments and fuel treatment prescriptions for the recommended Treatment Areas.	NFN, SRD, MFLNRO with FNESS and forest tenure holder support.  Interagency cooperation required.
Rationale: Recommended treatment areas based on local wildfire risk analysis. High risk areas within 500m of the community or critical infrastructure are a priority for treatment.				
6.	High	To engage in the FireSmart program; to reduce the fuel hazard and ignition risk within identified FireSmart priority areas.	Implement the FireSmart Activities recommended in Table 7 of this report.	NFN, (possibly Operations and Maintenance)
Rationale: The FireSmart program is a nationwide initiative. Several post-wildfire examples across the country show how FireSmart activities reduce the structure losses associated with WUI fires. FireSmart activities are a focus area for all CWPP's developed under the UBCM CRI funding program. FireSmart is implemented through best practices in 7 disciplines: education, emergency planning, vegetation management, legislation, development, interagency cooperation, and cross-training.				
8.	High	To reduce the fuel hazard from previously brushed materials within the community.	Dispose of (chip and haul away, and/or burn) vegetative material that was previously cleared as part of the 2019 community brushing project. Ensure any future materials from brushing or FireSmart activities have plan for removal.	NFN
Rationale: Dead/down/dry surface fuels are a fire hazard. Fuel management requires the removal of surface and ladder fuels. Best practice for removal is to chip and haul away.				
10.	High	To make this Plan and its associated maps available to the community.	Upload a digital copy of the CWPP to the Nuchatlaht First Nation and SRD Emergency Planning websites.	NFN and SRD
Rationale: Recommended best practice for community education and awareness regarding wildfire protection planning and FireSmart program implementation.				
12.	High	To improve community awareness of wildfire risk and raising awareness of the	Organize an annual Community Fire Safety day.  Activities may include checking fire extinguishers and smoke alarms in homes, conducting	NFN with FNESS or SRD support

		wildfire threat to the community.	FireSmart clearing of Priority 1 (up to 10m) zones around homes, fire extinguisher practice, water suppression system (fire hydrants) practice, water pump practice. The Safety day could be timed with Fire Prevention Week which takes place annually during the 2 <sup>nd</sup> week of October each year. October 4 to 10, 2020 is the next Fire Prevention Week.	
Rationale: Recommended best practice for community education and awareness regarding wildfire protection planning and FireSmart program implementation. Addresses education and emergency planning FireSmart disciplines.				
14.	High	To engage regional operators and industrial stakeholders on the contents and recommendations in this plan.	Share this plan with regional operators and stakeholders including MFLNRORD, forest tenure holders (Western Forest Products Inc.), and BC Hydro. Areas of concern to highlight include the critical importance of Fair Harbour FSR for access and evacuation and minimizing the fuel hazards along its right-of-way; treatment areas in identified high risk areas on Crown/TFL lands; and minimizing fuel hazards along transmission line rights-of-way.	NFN and SRD  Regional operators and stakeholders should review this plan.
Rationale: Inter-agency cooperation within the WUI is necessary to protect a community and its critical infrastructure. Recommended best practice for information sharing, awareness, collaboration, and cooperation.				
17.	High	To improve community and public awareness of wildfire prevention information.	Work with BCWS North Island Fire Zone to install Wildfire Information signage at the junction of T'ashii-is Road and Fair Harbour FSR.	SRD, NFN
Rationale: Based on CWPP engagement with NFN. Community interest in education and awareness; and increasing awareness of visitors/workers in the area that there is a community at Oclucje.				
20.	High	To improve the availability of fire suppression equipment and supplies.	Conduct an inventory of available hand tools (shovels, pulaskis, axes, backpack water pump, hydrant hoses, fittings/nozzles). Purchase hand tools and spare hoses for community use. Offer training to community members, ideally through the S100 course.	NFN

Rationale: Best practice recommendation based on gaps identified during CWPP engagement. The current equipment inventory includes a water pump and hoses associated with hydrant toolboxes. Other hand tools or spare hoses/nozzles not known.

21.	High	To improve community preparedness for fire response (i.e.: house fires, back yard burns).	Establish written procedures with roles and responsibilities for responding to structure and WUI fire events in the community. Both documentation and operational practice of the procedures are recommended.	NFN
-----	------	-------------------------------------------------------------------------------------------	---------------------------------------------------------------------------------------------------------------------------------------------------------------------------------------------------------------	-----

Rationale: Best practice recommendation based on gaps identified during CWPP engagement.

23.	High	To clear and maintain a helicopter landing area for emergency evacuations and/or wildfire response operations.	Designate an area (within the Emergency Plan) to be used as helicopter landing area. Maintain this area to be free of obstructions, loose debris and overhanging vegetation or obstacles. The best available option is the field.	NFN
-----	------	----------------------------------------------------------------------------------------------------------------	-----------------------------------------------------------------------------------------------------------------------------------------------------------------------------------------------------------------------------------	-----

Rationale: Best practice recommendation for emergency access, BCWS access, and emergency evacuation, based on gaps identified during CWPP engagement.

24.	High	To improve emergency preparedness in the event a wildfire or other event disrupting utility services and road access.	<p>Ensure each home has an emergency kit including supplies for staying at home following an emergency, and grab-and-go bags containing the essentials in case of an immediate evacuation.</p> <p>Purchase community emergency supplies in case wildfire cuts off road access to the community including generator and fuel, drinking water, and non-perishable food.</p> <p>A dry, sealed storage area is required to keep these items.</p>	NFN
-----	------	-----------------------------------------------------------------------------------------------------------------------	----------------------------------------------------------------------------------------------------------------------------------------------------------------------------------------------------------------------------------------------------------------------------------------------------------------------------------------------------------------------------------------------------------------------------------------------	-----

Rationale: Best practice recommendation for emergency planning based on gaps identified during CWPP engagement.

28.	High	To improve community preparedness in using available fire tools and equipment if required in an emergency.	Organize community training days to practice using the available community fire suppression system and other suppression equipment.	NFN with support from FNESS
-----	------	------------------------------------------------------------------------------------------------------------	-------------------------------------------------------------------------------------------------------------------------------------	-----------------------------

Rationale: Best practice recommendation based on gaps identified during CWPP engagement.

## MEDIUM PRIORITY RECOMMENDATIONS

No.	Priority	Objective	Recommendation / Next Steps	Responsibility
9.	Med	To reduce the ignition risk of structures within the community by following FireSmart guidelines for construction materials.	Ensure that roof replacements, building restoration, or new construction considers the construction materials and principles found in the FireSmart Begins at Home – Home Development Guide. Any new construction occurring within the community should follow the FireSmart Home Development guide.	NFN; construction contractors
Rationale: Best practice as per the FireSmart program, described in #6 above.				
11.	Med	To improve community awareness of wildfire risk and raising awareness of the wildfire threat to the community.	Provide regular communications to community members (flyers, notice boards, social media). Recommend at least one fire related communication per month (more often during fire season if required). Content of the communications include reminders on FireSmart practices, fire danger ratings, fire bans, fire prevention tips, air quality alerts etc.	NFN
Rationale: Recommended best practice for community education and awareness regarding wildfire protection planning and FireSmart program implementation.				
13.	Med	To improve inter-agency communication regarding wildfire risk, emergency preparedness, response, and recovery.	The SRD should arrange an annual regional meeting, prior to fire season, to include First Nations' community administration, BCWS – North Island Fire Zone, EMBC, local fire departments, and Village representative to review incident command structure, communication strategies and emergency support services in the event of a WUI fire.	SRD
Rationale: Key contacts and individuals may change from year to year. Annual meetings recommended as a best practice to build relationships and improve communication in the event of a WUI event. Interagency cooperation and cross-training are FireSmart disciplines.				
15.	Med	To ensure implementation and	Schedule annual check-ins between Nuchatlaht First Nation,	NFN, SRD and FNESS

		continual engagement with CWPP.	SRD, and FNESS to follow-up on recommendation implementation. Annual check-ins should also develop an annual action plan of priority items to be worked on for the year.	
Rationale: Recommended best practice to ensure follow-up on action items.				
22.	Med	To improve water availability for fire suppression.	Hire a qualified professional to assess water availability needs for fire suppression and community use.	NFN
Rationale: Best practice recommendation based on gaps identified during CWPP engagement.				
25.	Med	To mitigate the impacts of heavy wildfire smoke and poor air quality on the community.	Improve indoor air quality with the purchase and use of High-Efficiency Portable Air (HEPA) filters, etc. Purchase N95 respirator masks for distribution to community members during heavy smoke conditions to reduce smoke exposure.	NFN with support from FNESS and FNHA
Rationale: Recommended equipment for improving indoor air quality during heavy smoke conditions, a concern identified during CWPP engagement.				
26.	Med	To build capacity in the emergency management area.	Work with FNESS to develop an emergency management program and training schedule that meets the needs of the community.	NFN with support from FNESS
Rationale: Best practice recommendation based on gaps identified during CWPP engagement.				
29.	Med	To increase the likelihood that homes survive a WUI fire due to the distance of Oculcje to other protective services.	Purchase exterior sprinkler kits for homes; provide training to the community for how to set up the kits.	NFN with support from FNESS
Rationale: Based on current inventory, the equipment availability for structural protection could be improved. Sprinkler kits are a relatively low-cost option and highly effective option.				

## LOW PRIORITY RECOMMENDATIONS

No.	Priority	Objective	Recommendation / Next Steps	Responsibility
-----	----------	-----------	-----------------------------	----------------

7.	Low	To reduce the ignition risk of propane tanks located near structures.	If propane is used as a fuel source for new homes/structures, ensure that the tank is located more than 10m from the structure and is located on top of a non-combustible surface (i.e.: gravel bed or concrete pad), and oriented safely away from nearby structures.	NFN
Rationale: Propane tanks are a hazardous fuel and according the FireSmart home development best practices, should be located at least 10m from structures.				
16.	Low	To increase awareness and to reduce the risk of human caused ignitions during high/extreme fire danger.	Develop local regulation and policies for establishing community fire/fireworks bans during high/extreme fire danger class.	NFN
Rationale: Recommended best practice to reduce the risk of human-caused ignitions during high fire danger.				
18.	Low	To improve the availability of fire suppression equipment and supplies.	Construct a storage building for a future fire truck and for emergency supplies. Ensure that materials used for construction meet FireSmart Development guidelines.	NFN with support from FNESS ISC Capital Facilities Funding, Infrastructure Funding programs
Rationale: Based on CWPP engagement with NFN on possibility of a fire truck donation from the Village of Zeballos.				
19.	Low	To improve community preparedness in responding to a structure fire.	If a pumper truck or other fire suppression equipment is acquired, ensure community members are adequately trained in the operation and maintenance of the equipment.	NFN with support from FNESS
Rationale: As above.				
27.	Low	To build capacity in the emergency management area.	Work with FNESS to plan for Foundational Training for governance staff, beginning with Tier 1 and progressing to Tier 3 over the next 5 years.	NFN with support from FNESS
Rationale: Best practice recommendation based on gaps identified during CWPP engagement.				

## SUMMARY OF POTENTIAL RESOURCES AND FUNDING SUPPORTS

Resources	Land Jurisdiction	Types of Projects
Forest Enhancement Society BC (FESBC)	Provincial Crown	<ul style="list-style-type: none"> <li>Fuel management treatment prescriptions and implementation</li> </ul>
UBCM Community Resiliency Investment Program (CRI)	Municipal First Nations Private	<ul style="list-style-type: none"> <li>FireSmart hazard assessments, demonstration projects, off-site debris disposal (i.e.: chip trucks)</li> <li>Community Education</li> <li>Development planning</li> <li>Emergency planning and cross training</li> </ul>
UBCM Community Emergency Preparedness Fund (CEPF)	n/a	<ul style="list-style-type: none"> <li>Emergency support services training</li> <li>Fire department training or equipment</li> <li>Emergency evacuation planning</li> <li>Emergency operations training</li> </ul>
First Nations Emergency Support Services – Indigenous Services Canada (FNESS/ISC)	First Nations Reserve lands	<ul style="list-style-type: none"> <li>Fuel management prescriptions and treatments On-Reserve</li> </ul>
BC Wildfire Service	Provincial Crown	<ul style="list-style-type: none"> <li>Fuel management treatments (in coordination with local fire zone officer) <ul style="list-style-type: none"> <li>Public education and outreach</li> </ul> </li> </ul>

**Nuchatlaht Community Wildfire Protection Plan Area of Interest**

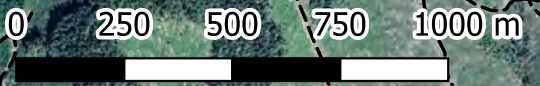
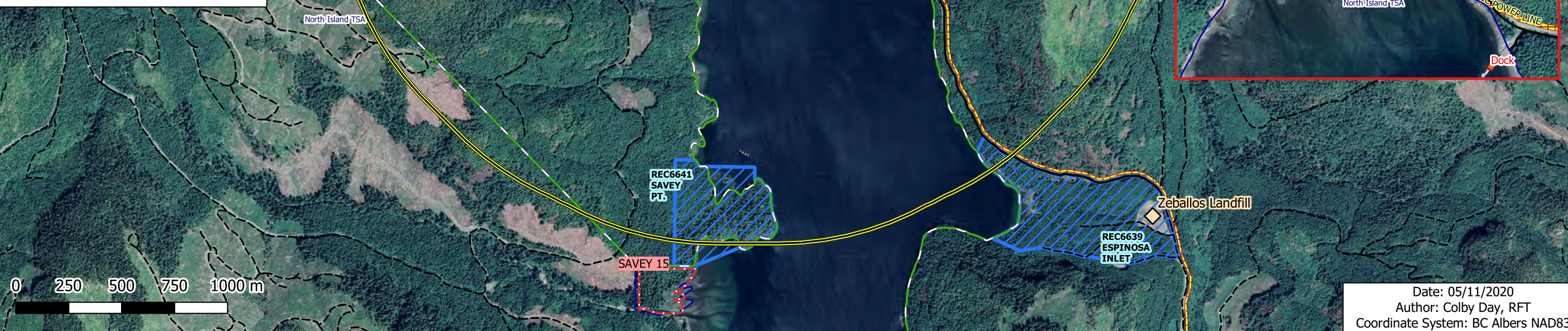
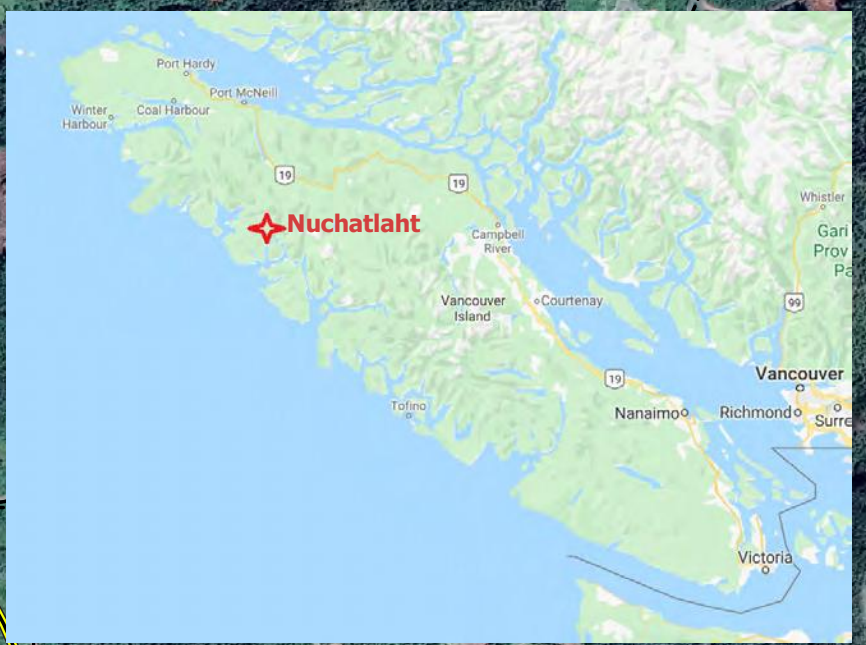


Scale: 1:17500  
 Strathcona Regional District  
 Electoral Area A  
 Nuchatlaht Reserve



**Legend**

- Heli Staging Sites
- Zeballos Landfill
- Access\_Roads
- Resource Roads
- Crown Tenure - Utilities
- CWPP AOI
- Tree Farm Licence
- North Island TSA
- Electoral Area
- Regional District
- Municipality
- Indian Reserves
- Recreation Polygon
- Lakes
- Major Rivers
- Wetlands
- Google Satellite



**Nuchatlaht Community Wildfire Protection Plan**  
**Updated Fire Risk Map**



Scale: 1:17500  
 Strathcona Regional District  
 Electoral Area A  
 Nuchatlaht Reserve



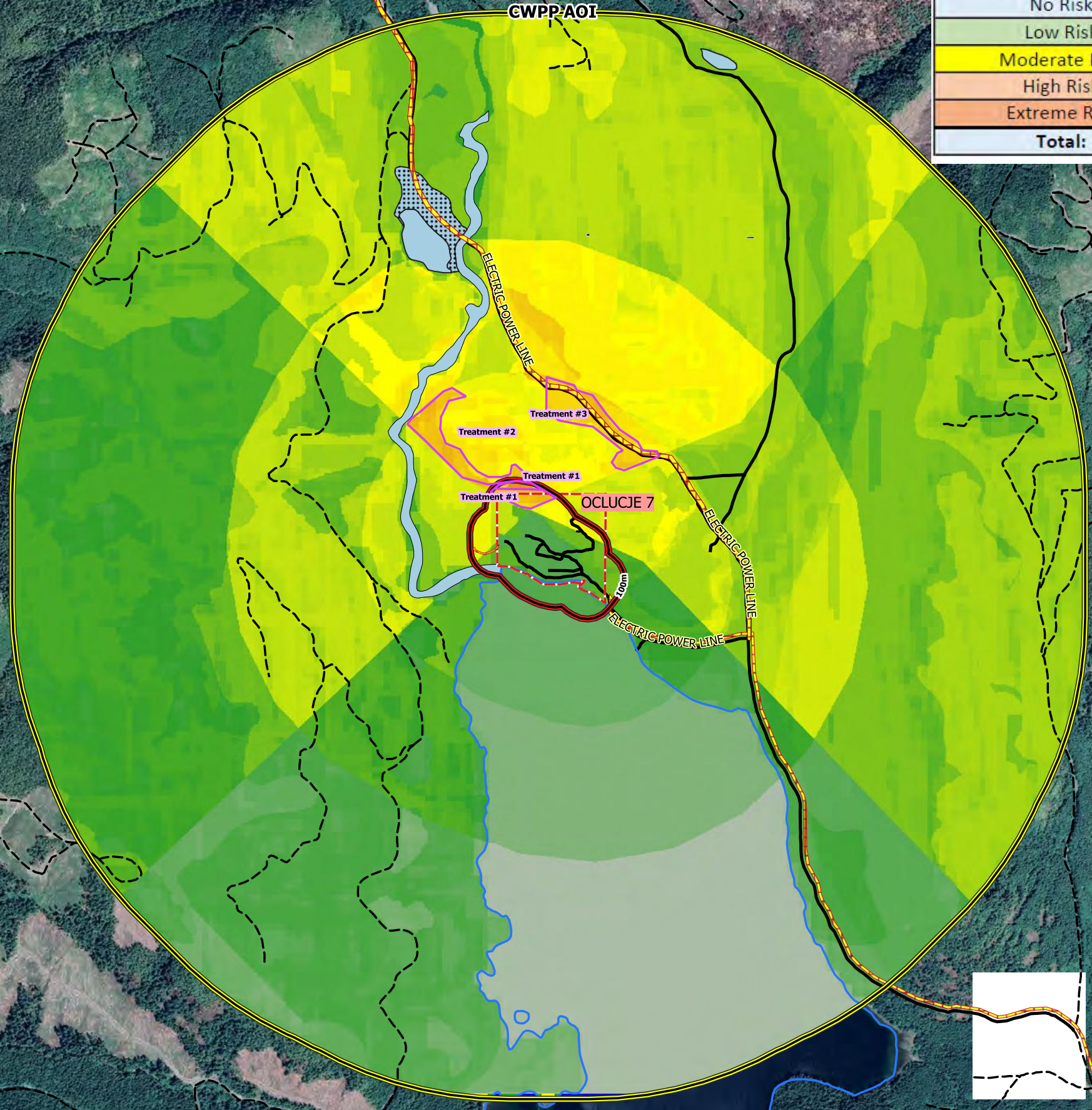
**Legend**

- Access Roads
- - - Resource Roads
- ▭ CWPP AOI
- ▭ 100M Buffer
- ▨ Crown Tenure - Utilities
- ▭ Proposed Treatment Updated

- Updated Fire Risk
- 0.1 (No Risk)
  - 3.9 (Low)
  - 6.9 (Moderate)
  - 8.9 (High)
  - 9 + (Extreme)

Google Satellite

Nuchatlaht Updated Fire Risk Summary	
Updated Fire Risk	Area (ha)
No Risk	0
Low Risk	350
Moderate Risk	834
High Risk	101
Extreme Risk	0
<b>Total:</b>	<b>1,285</b>



Nuchatlaht CWPP  
Ownership Treatment Map



Scale: 1:10000  
Strathcona Regional District  
Electoral Area A  
Nuchatlaht First Nation



**Legend**

- ◆ Nuchatlaht Infrastructure
- ▭ Proposed Treatment Updated
- Digital Road Atlas
  - Gravel
  - Unknown, Deact
  - Paved
  - Highway
- ▭ CWPP AOI
- ▭ Crown Tenure - Utilities
- ▭ Tree Farm Licence
- ▭ Private Woodlots
- ▭ Crown Woodlots
- ▭ Electoral Area
- ▭ Municipality
- ▭ Indian Reserves
- ▭ Community Watersheds
- ▭ Lakes
- ▭ Major Rivers
- ▭ Wetlands
- Parcel Fabric
  - ▭ Crown Agency
  - ▭ Crown Provincial
  - ▭ Federal
  - ▭ First Nation
  - ▭ Mixed Ownership
  - ▭ Municipal
  - ▭ None
  - ▭ Private
  - ▭ Unknown
  - ▭
- Google Satellite

Treatment Area	WUI Threat / Risk	Priority	Approx. Area (ha)	Land Ownership	Comments / Rationale
1	Mod / High	High	1.4ha	IR (0.7ha) Crown (0.7ha)	High risk within WUI100
2	High / High	Low	3.4ha	Crown (TFL)	High risk within WUI500
3	High / High	High	4.4ha	Crown (TFL)	High risk within WUI500. Along FSR and transmission line right-of-way. Next to recently harvested slash.

TFL19  
Western Forest

Treatment #1  
Treatment #1  
Hydrant1  
Water Treatment  
OCLUCJE 7  
Hydrant2  
Hydrant3  
Hydrant4  
Band Hall  
Water Tower  
Old Generator

Treatment #3

Treatment #2

Dock

0 250 500 750 1000 m

Date: : 06/05/2020  
Author: Colby Day, RFT  
Coordinate System: BC Albers NAD83