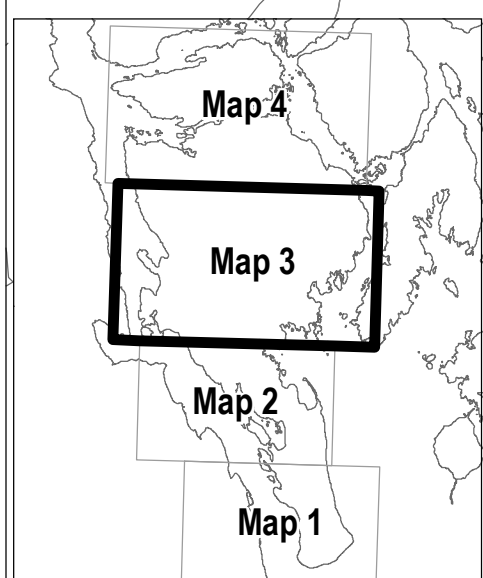


See Map 4



Unless otherwise designated on these maps all small peripheral islands surrounding Quadra Island are zoned Rural One (RU-1) and all surface of water is zoned Access Two (AC-2)

Bylaw No. 1213
Quadra Island Zoning Bylaw, 1990
Map 3 Last Amendment - Bylaw No. 187
 January 23, 2014

1:20,000

Map 3

See Map 2