



**RFQ 11-23
REQUEST FOR QUOTATIONS**

Supply and Delivery of Shipping Containers

The Strathcona Regional District invites quotations from qualified vendors to supply and deliver:

- One 8' wide by 8' tall by 8' long steel shipping container to the Sayward Valley Firehall;
- Two 8' wide by 8' tall by 10' long steel shipping containers to Read Island;
- One 8' wide by 8' tall by 20' long steel shipping container to the Village of Sayward's Kelsey Centre;
- One 8' wide by 8' tall by 20' long steel shipping container to the Ehattesaht Chinehkint First Nation's Tsunami Muster Point; and
- One 8' wide by 8' tall by 20' long steel shipping container to the Heritage Hall in the Sayward Valley.

Quotations clearly marked "Supply and Delivery of Shipping Containers" will be accepted at the office of the Strathcona Regional District at 990 Cedar Street, Campbell River, BC V9W 7Z8, until **4:00 pm Pacific Time on Friday, November 10, 2023.**

All prices must be quoted in Canadian dollars with applicable taxes shown separately. Prices are to remain valid for a minimum period of 60 days from the submission deadline.

Written quotations on the attached completed and signed quotation form must be submitted by mail or in person to 990 Cedar Street, Campbell River, BC, V9W 7Z8, or by email to procurement@srd.ca or fax at 250-830-6710. The vendor is solely responsible for ensuring that the quotation is received at the Regional District office before the submission deadline.

The following criteria will be used to select the successful vendor:

- a) Lowest price to the Strathcona Regional District; and
- b) Delivery schedule.

All queries relating to this Request for Quotation should be directed to Shaun Koopman at 250-830-6702 or by email to procurement@srd.ca. Any addenda to this RFQ will be made available on the Strathcona Regional District and BC Bids websites; verbal communications will not be binding unless confirmed by written addenda.

SPECIFICATIONS

The SRD requires an established vendor to supply and deliver:

1. Two shipping containers that meet the following minimum criteria to the Village of Sayward and Ehattesaht Chinehkint First Nation (one each):
 - 8-feet wide by 8-feet high by 20-feet long;
 - Steel construction, insulated inside (walls and ceiling) with spray-foam insulation;
 - Pressure vents installed that allow air flow throughout the shipping containers, but do not permit rain to enter inside;
 - Three 20-foot long shelving racks on both sides of the shipping container (example in Appendix A); and
 - Painted the colour Blue (example in Appendix B).

Delivery Locations	
Ehattesaht Chinehkint First Nation	Located at 49°59'33"M 126°51'05"W approximately 1 kilometer west of Ehatis See Appendix E
Village of Sayward	652 H'Kusam Way

2. One shipping container that meets the following minimum criteria to the Sayward Valley:
 - 8-feet wide by 8-feet high by 20-feet long;
 - Steel construction, insulated inside (walls and ceiling) with spray-foam insulation;
 - Pressure vents installed that allow air flow throughout the shipping containers, but do not permit rain to enter inside;
 - Three 20-foot long shelving racks on both sides of the shipping container (example in Appendix A); and
 - Painted the colour Baja (example in Appendix C)

Delivery Locations	
Heritage Hall (Sayward Valley)	1257 Sayward Road

3. One shipping container that meets the following minimum criteria to the Sayward Valley Firehall:
 - 8-feet wide by 8-feet high by 8-feet long;
 - Steel construction, insulated inside (walls and ceiling) with spray-foam insulation;
 - Pressure vents installed that allow air flow throughout the shipping containers, but do not permit rain to enter;
 - Two 7-foot long shelving racks on both sides of the shipping container; and
 - Painted the colour Black.

Delivery Location	
Sayward Valley Firehall	1306 Sayward Road

4. Two shipping containers that meet the following minimum criteria to Read Island:
 - 8-feet wide by 8-feet high by 8-feet long;
 - Steel construction, insulated inside (walls and ceiling) with spray-foam insulation;
 - Pressure vents installed that allow air flow throughout the shipping containers, but do not permit rain to enter;
 - Two 20-foot long shelving racks on both sides of the shipping container; and
 - Painted the colour Green (example in Appendix D).

Delivery Locations	
Read Island	Evans Bay See Appendix F

The quotation should also include the cost of delivering these shipping containers to the Village of Sayward, Ehattesaht Chinehkint First Nation, Sayward Valley and Read Island.

The majority of shipping containers will be offloaded directly onto cement footings, with the exception of the two Read Island shipping containers which will be required to be barged to Evans Bay on the east side of Read Island, picked up by a forklift and towed to their location. The proponent is expected to include the cost of barging the shipping containers to Read Island in their submission. The cost of transporting the shipping containers to their final location will be covered by the Strathcona Regional District.

Anticipated Timeline

RFQ submission deadline	Friday, November 10, 2023
Notification of award	Friday, November 24, 2023
Service delivery start	Monday, November 24, 2023
Project completion	Friday, May 24, 2024



**RFQ 11-23
QUOTATION FORM**

SUBMISSION DEADLINE: 4:00 PM PACIFIC TIME FRIDAY, NOVEMBER 10, 2023

Name of Firm: _____
Address: _____

Contact Name: _____
Phone: _____ Fax: _____
Email: _____

	\$
	\$
GST at 5%	\$
PST at 7% if applicable	\$
Total Price	\$

Deliver to: RFQ 11-23, Strathcona Regional District
990 Cedar Street
Campbell River, BC V9W 7Z8
Fax: 250-830-6710

or

Email to: procurement@srd.ca with "RFQ 11-23" in the subject line

Signing Authority Name and Title

Date

Authorized Signature

Appendix A – Example of Shelving



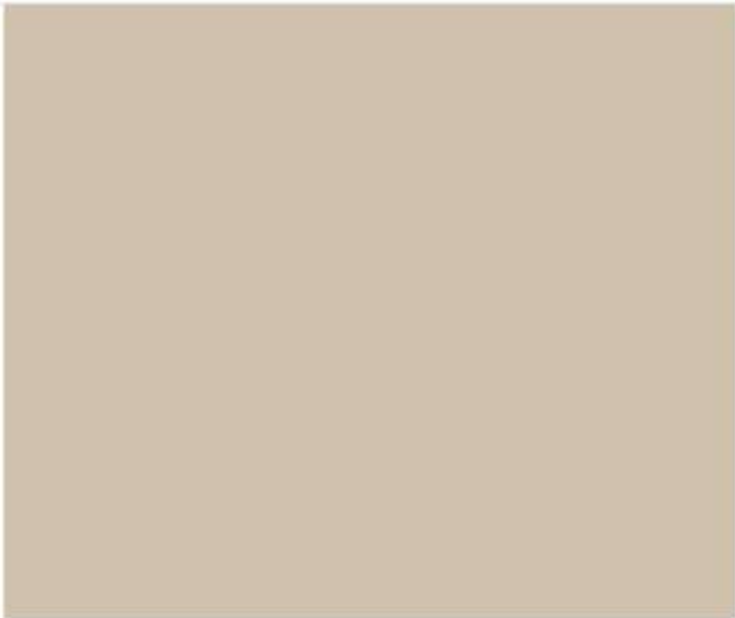
Appendix B – Example of the Colour Blue



Appendix C – Example of the Colour Baja

COLOUR DETAIL

x

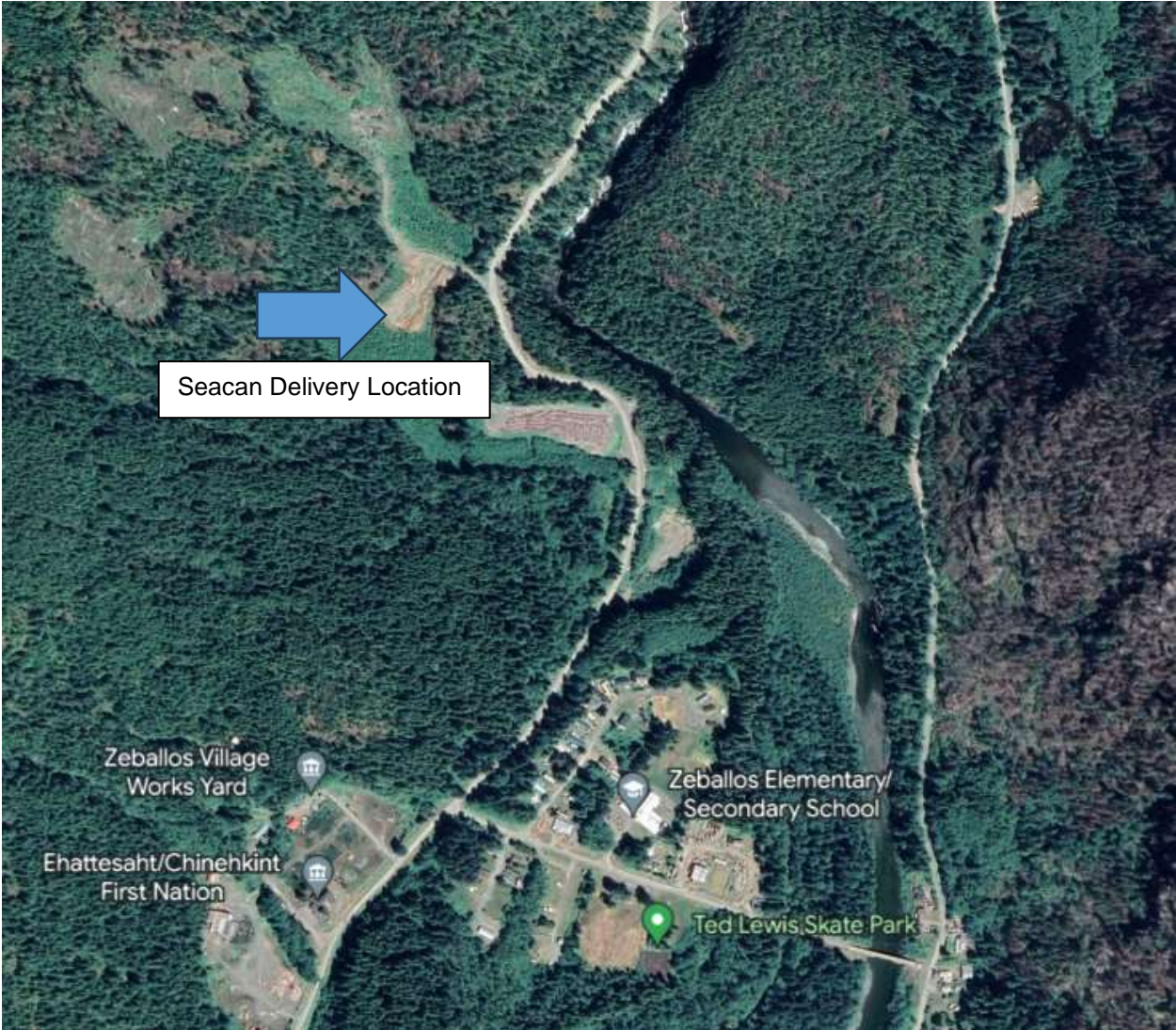


BAJA

Appendix D – Example of the Colour Green



Appendix E – Approximate Location of Shipping Container for Ehattesaht Chinehkint First Nation



Appendix F – Approximate Location of Shipping Container Delivery on Read Island

