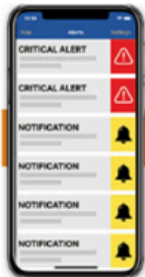


# SIGN UP FOR ALERTABLE

[www.srd.ca/alerts](http://www.srd.ca/alerts)

See Evacuation Map Inside



Public Alerts

Stay Informed



July, 2025

## SRD Emergency Services:

[preparedness@srd.ca](mailto:preparedness@srd.ca)

250-830-6702

[www.srd.ca/tsunami](http://www.srd.ca/tsunami)

## KYUQUOT AND FAIR HARBOUR TSUNAMI INFORMATION



# Fair Harbour and Kyuquot Tsunami Risk

For a **local** (offshore) tsunami:

- 7-metre (23-foot) waves will arrive in Fair Harbour 45 minutes after the ground stops shaking.
- 13-metre (43-foot) waves will arrive in Kyuquot 25 minutes after the ground stops shaking.

For a **distant** tsunami generated in Alaska:

- 5-metre (16-foot) waves will arrive in Fair Harbour and Kyuquot.

Tsunami evacuation protocols are DIFFERENT depending on whether you are in Kyuquot or Fair Harbour. Studying the attached inundation maps could save your life.

If your location doesn't allow you to evacuate to one of the Tsunami Muster Sites on the maps, evacuate to any area not shaded blue to ensure you are out of harm's way.

For more information about tsunami preparedness, visit  
[www.srd.ca/tsunami-mapping](http://www.srd.ca/tsunami-mapping)

## Fair Harbour

### Local Tsunami

If you are in Fair Harbour and experience a strong earthquake that knocks you down, DROP, COVER, and HOLD ON. Once the shaking stops, immediately proceed to the Fair Harbour Tsunami Muster Site, which is located at the sea can (shipping container) behind the cabins. Bring your emergency survival supplies with you, as you will likely be stranded here for a prolonged period of time.

### Distant Tsunami

If you are in or near Fair Harbour and experience ANY ONE of the distant tsunami signs (see right panel), immediately take your vehicle and leave Fair Harbour in a safe manner.

Once you are past Zeballos, you are safe from a distant tsunami.

- Unhitch your boat trailer from your vehicle and leave your boat in Fair Harbour.
- Do not attempt to remove your boat from the water.
- Arrange to carpool and ride share wherever possible to minimize congestion on the road.

## Kyuquot

### WHEN SHOULD I EVACUATE?

If you are in Kyuquot and experience ANY ONE of the tsunami warning signs (below), immediately proceed to your closest Tsunami Muster Point (either the Walters Island Community Hall or Kyuquot School) as indicated on the maps. Bring your emergency survival supplies with you, as you will likely be stranded here for a prolonged period of time.

### LOCAL TSUNAMI: DISTANT TSUNAMI:



**Strong  
earthquake**



**Tsunami  
Warning Sirens**



**See an  
unexpected rise/  
fall of the ocean**



**Radio and  
TV warning  
broadcasts**



**Hear a loud roar  
like a jet or train  
from the ocean**



**Emergency alerts  
via phone and text**





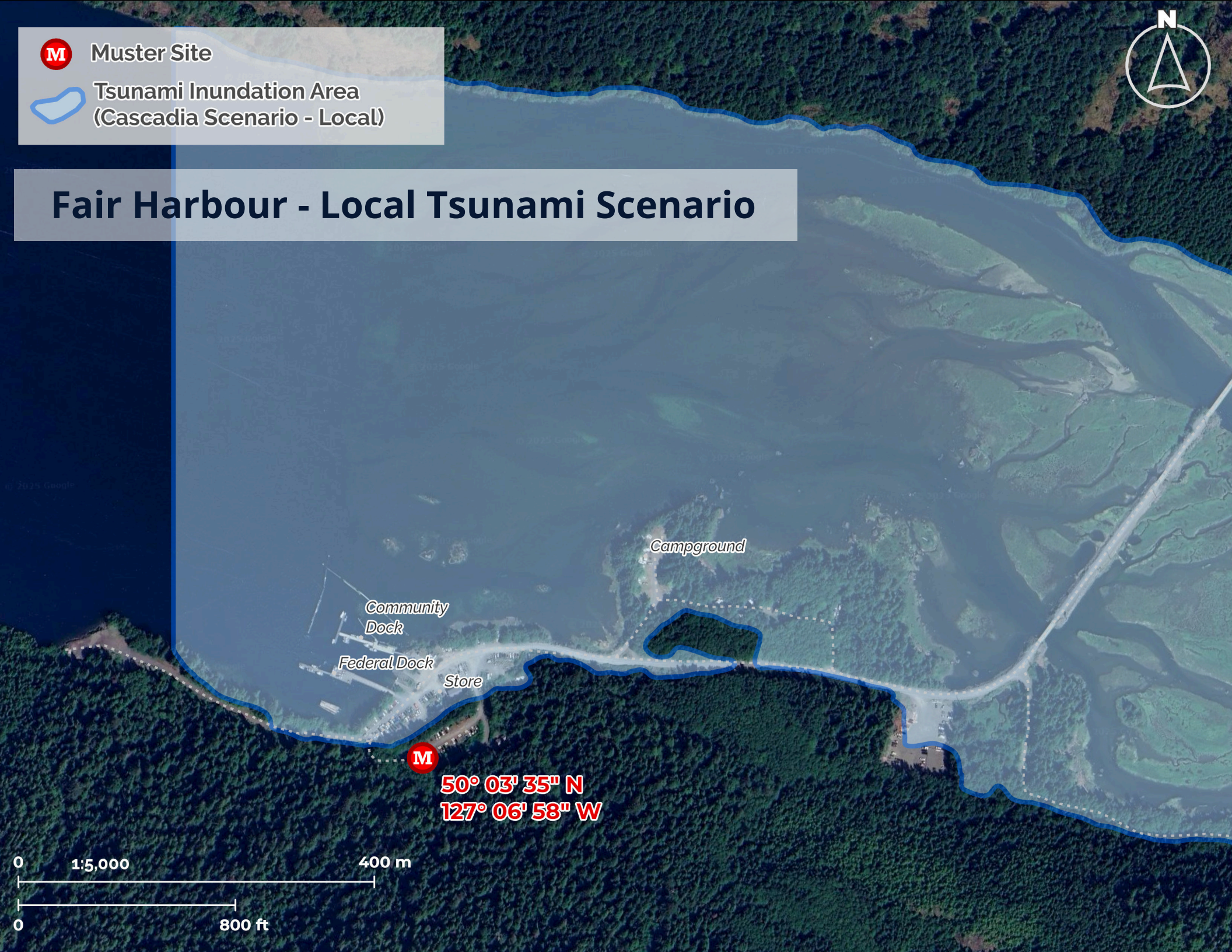
Muster Site



Tsunami Inundation Area  
(Cascadia Scenario - Local)



## Fair Harbour - Local Tsunami Scenario



50° 03' 35" N  
127° 06' 58" W

0 1:5,000

400 m

0 800 ft





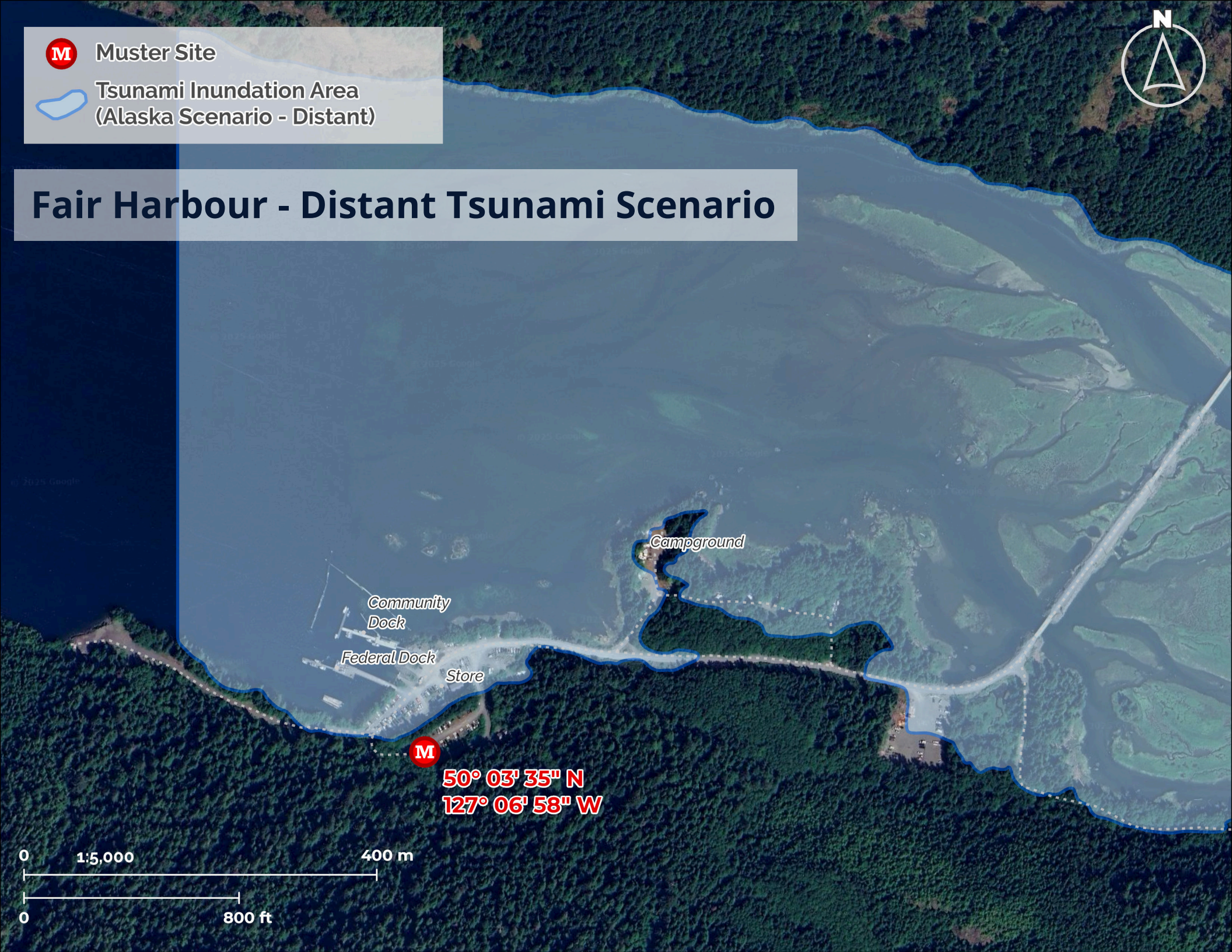
Muster Site



Tsunami Inundation Area  
(Alaska Scenario - Distant)



## Fair Harbour - Distant Tsunami Scenario



Community  
Dock

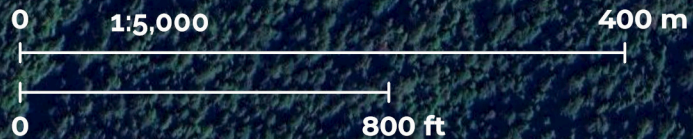
Federal Dock

Store

Campground



50° 03' 35" N  
127° 06' 58" W







Muster Site



Tsunami Inundation Area  
(Cascadia Scenario - Local)



Extent of Tsunami Study Area



School

**50° 01' 58" N**  
**127° 22' 30" W**

Commercial Dock  
Community Dock

OKIME ISLAND

Kyuquot Inn



**50° 01' 35" N**  
**127° 22' 14" W**

Post Office

Community Hall



**50° 01' 34" N**  
**127° 22' 37" W**

WALTERS ISLAND

KON TIKI ISLAND

ROLSTON ISLAND

## Kyuquot - Local Tsunami Scenario

0 1:8,000 400 m  
0 800 ft





Muster Site



Tsunami Inundation Area  
(Alaska Scenario - Distant)



Extent of Tsunami Study Area



School

**50° 01' 58" N**  
**127° 22' 30" W**

Commercial Dock  
Community Dock

OKIME ISLAND

Kyuquot Inn



**50° 01' 35" N**  
**127° 22' 14" W**

Post Office

Community Hall



**50° 01' 34" N**  
**127° 22' 37" W**

WALTERS ISLAND

KON TIKI ISLAND

ROLSTON ISLAND

## Kyuquot - Distant Tsunami Scenario

